

APP CRS	Rwly Idg	2901
167°	TDZE	574
	Apt Elev	574

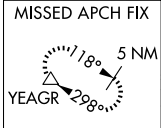
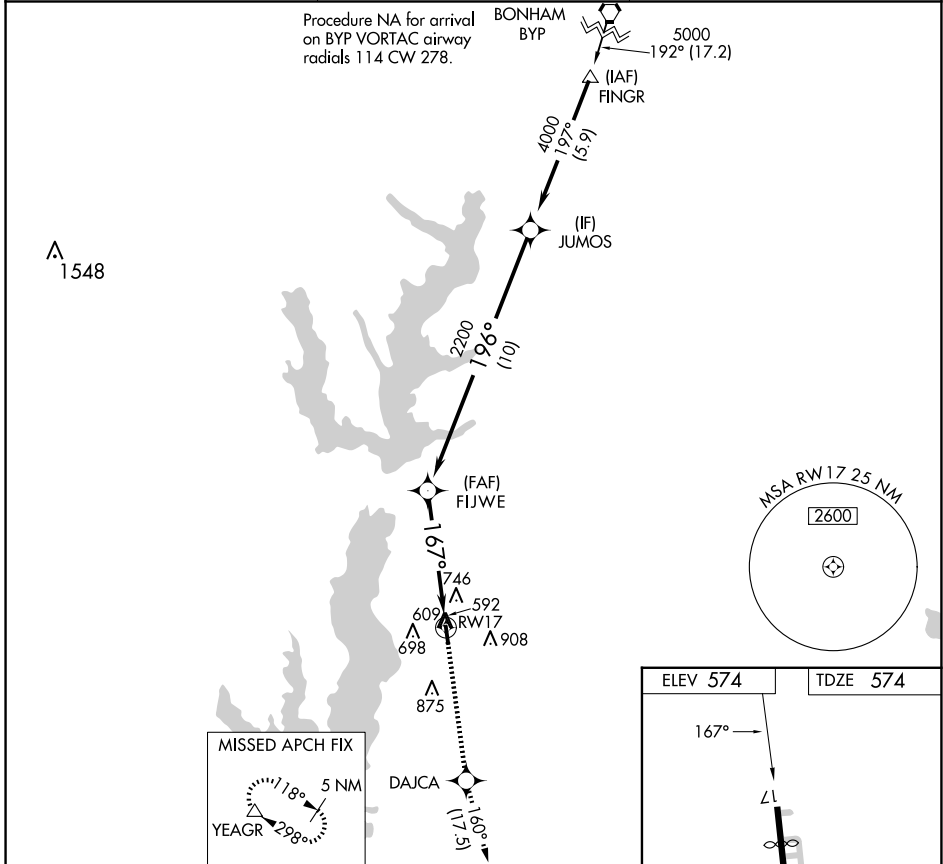
RNAV (GPS) RWY 17

RALPH M HALL/ROCKWALL MUNI (F46)

⚠ DME/DME RNP-0.3 NA. When local altimeter setting not received, use Dallas Love Fld altimeter setting and increase all MDA 80 feet. Helicopter visibility reduction below 1 SM NA. Procedure NA at night.

MISSED APPROACH: Climb to 5000 direct DAJCA and on track 160° to YEAGR and hold.

AWOS-3PT 121.25	LONE STAR APP CON 124.3 282.275	UNICOM 122.8 (CTAF) 0
---------------------------	---	---------------------------------



ELEV 574	TDZE 574
----------	----------

167°

3.00°

TCH 40 RWY 17

3373 x 45

35

LIRL Rwy 17-35 0

JUMOS	4000	196°	5000	DAJCA	tr 160°	YEAGR
			FIJWE	3.00°	TCH 40 RWY 17	
			2200	167°		
	10 NM		5 NM			
CATEGORY	A	B	C	D		
LNVA MDA	1140-1	566 (600-1)	NA			
CIRCLING	1280-1	706 (800-1)	NA			

SC-2, 11 JUN 2026 to 09 JUL 2026

SC-2, 11 JUN 2026 to 09 JUL 2026