

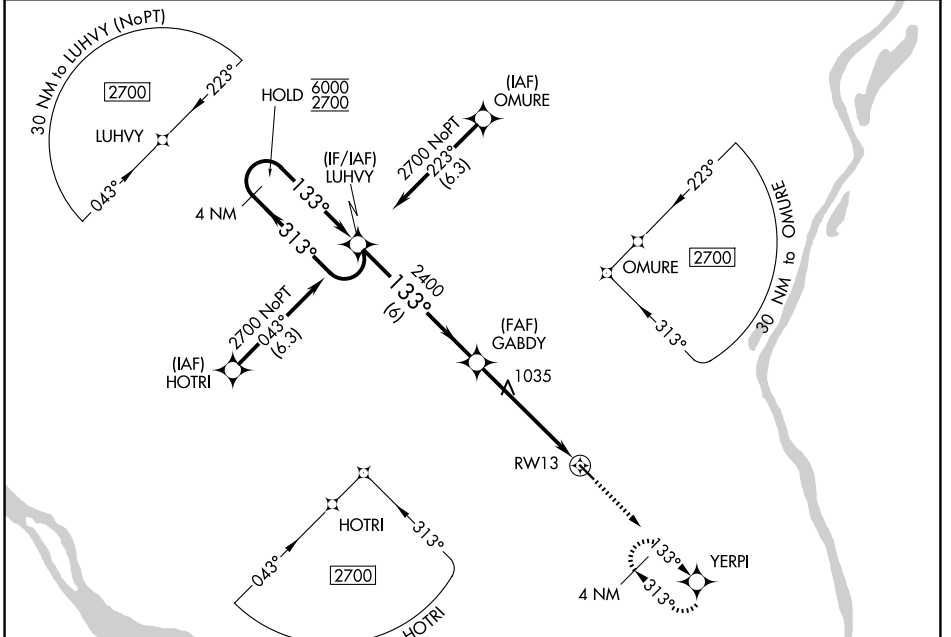
WAAS CH <b>86642</b> <b>W13A</b>	APP CRS <b>133°</b>	Rwy Ldg <b>4000</b> TDZE <b>710</b> Apt Elev <b>710</b>
--	------------------------	---

# RNAV (GPS) RWY 13

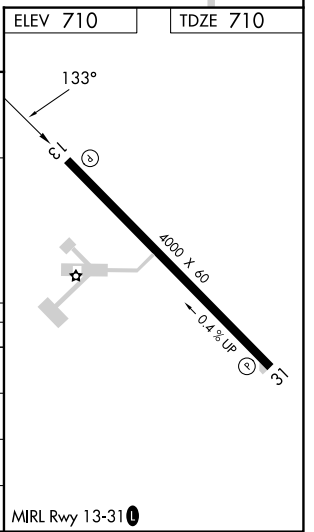
PITTSFIELD PENSTONE MUNI (PPQ)

RNP APCH.	For uncompensated Baro-VNAV systems, LNAV/VNAV NA below -16°C or above 54°C. Rwy 13 helicopter visibility reduction below 3/4 SM NA.	MISSED APPROACH: Climb to 2600 direct YERPI and hold.
-----------	---	---

AWOS-3T <b>118.525</b>	KANSAS CITY CENTER <b>126.225 317.775</b>	UNICOM <b>122.8 (CTAF) 0</b>
---------------------------	--	---------------------------------



4 NM Holding Pattern		2600 YERPI		
<p>LUHVVY</p> <p>6000 ← 313°</p> <p>2700 → 133°</p> <p>GP 3.00°</p> <p>TCH 32</p>		<p>GABDY</p> <p>2400</p> <p>*1.7 NM to RWY13</p> <p>*LNAV only.</p> <p>RWY13</p>		
6 NM		3.5 NM		
1.7 NM				
CATEGORY	A	B	C	D
LPV DA	960-1	250 (300-1)		NA
LNAV/VNAV DA	1168-1 3/8	458 (500-1 3/8)		NA
LNAV MDA	1300-1	590 (600-1)	1300-1 3/4 590 (600-1 3/4)	NA
CIRCLING	1300-1	590 (600-1)	1340-1 3/4 630 (700-1 3/4)	NA



EC-3, 11 JUN 2026 to 09 JUL 2026

EC-3, 11 JUN 2026 to 09 JUL 2026