

WAAS CH <b>50333</b> <b>W01A</b>	APP CRS <b>013°</b>	Rwy Ldg TDZE Apt Elev	<b>3200</b> <b>857</b> <b>858</b>
--	------------------------	-----------------------------	---

# RNAV (GPS) RWY 1

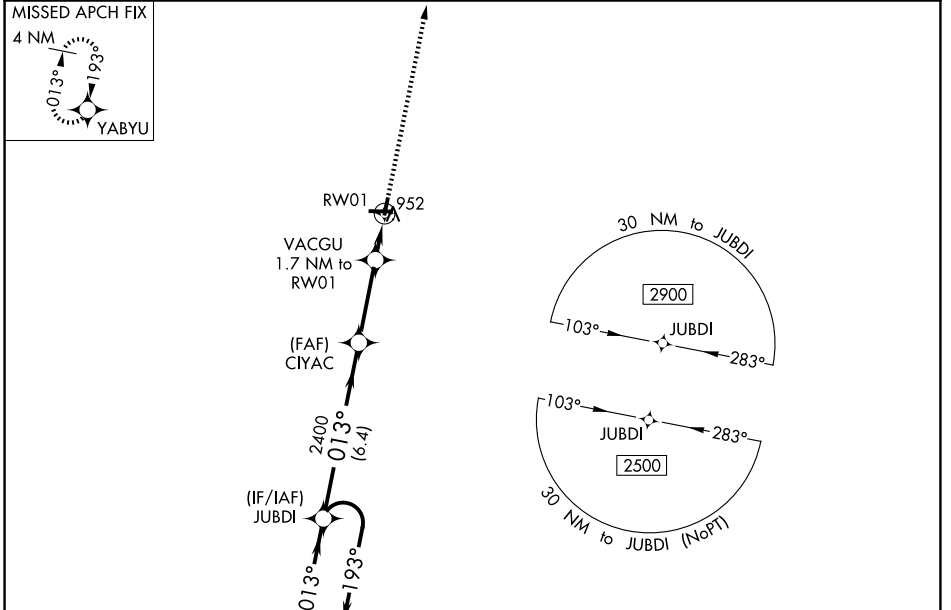
KEWANEE MUNI (EZI)

RNP APCH - GPS.

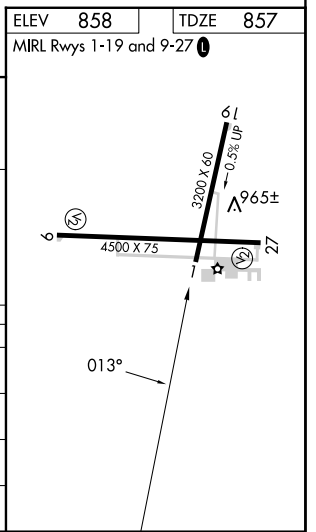
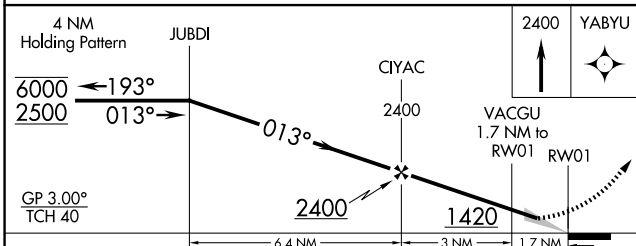
**NA** Baro-VNAV NA. Use GBG altimeter setting; when not received, use MLI altimeter setting and increase LPV DA to 1212 feet; increase LNAV/VNAV DA to 1242 feet and all visibilities 1/8 SM. Increase all MDAs 40 feet; and Circling visibility Cat C 1/4 SM.

**MISSED APPROACH:** Climb to 2400 direct YABYU and hold.

GBG AWOS-3 <b>118.975</b>	QUAD CITY APP CON★ <b>133.275 257.8</b>	UNICOM <b>122.8 (CTAF) 0</b>
------------------------------	--	---------------------------------



ELEV <b>858</b>	TDZE <b>857</b>
MIRL Rwy 1-19 and 9-27 <b>0</b>	



CATEGORY	A	B	C	D
LPV DA	1182-1 325 (400-1)			NA
LNAV/VNAV DA	1212-1 355 (400-1)			NA
LNAV MDA	1300-1	443 (500-1)	1300-1 1/8 443 (500-1 1/8)	NA
CIRCLING	1340-1 482 (500-1)	1520-1 662 (700-1)	1520-1 1/4 662 (700-1 1/4)	NA

EC-3, 11 JUN 2026 to 09 JUL 2026

EC-3, 11 JUN 2026 to 09 JUL 2026