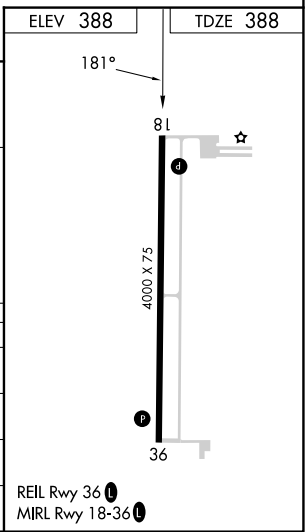
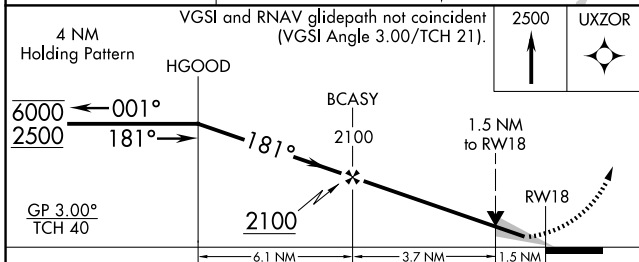
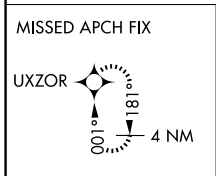
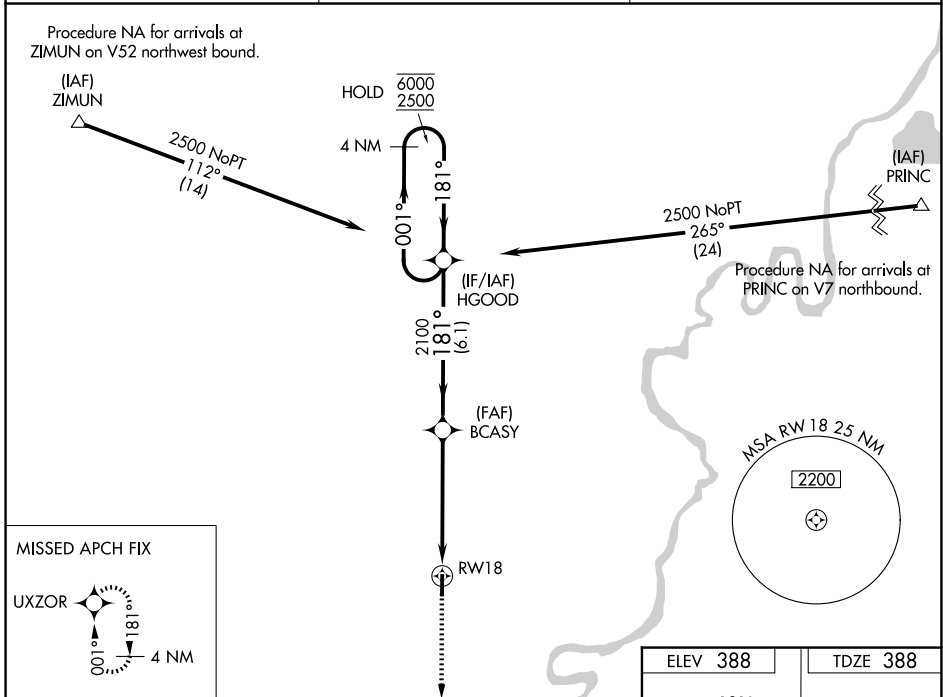


WAAS CH <b>56343</b> <b>W18A</b>	APP CRS <b>181°</b>	Rwy Ldg TDZE Apt Elev	<b>4000</b> <b>388</b> <b>388</b>
--	------------------------	-----------------------------	---

# RNAV (GPS) RWY 18

CARMI MUNI (CUL)

RNP APCH - GPS.		MISSED APPROACH: Climb to 2500 direct UXZOR and hold.
<p>▼ For uncompensated Baro-VNAV systems, LNAV/VNAV NA ▲ below -19°C or above 54°C.</p>		
AWOS-3 <b>118.425</b>	EVANSVILLE APP CON ★ <b>127.35 343.7</b>	UNICOM <b>122.8</b> (CTAF) <b>0</b>



CATEGORY	A	B	C	D
LPV DA	638- <sup>3</sup> / <sub>4</sub> 250 (300- <sup>3</sup> / <sub>4</sub> )			NA
LNAV/VNAV DA	679- <sup>7</sup> / <sub>8</sub> 291 (300- <sup>7</sup> / <sub>8</sub> )			NA
LNAV MDA	900-1 512 (600-1)		900-1 <sup>3</sup> / <sub>8</sub> 512 (600-1 <sup>3</sup> / <sub>8</sub> )	NA
CIRCLING	900-1 512 (600-1)		1000-1 <sup>3</sup> / <sub>4</sub> 612 (700-1 <sup>3</sup> / <sub>4</sub> )	NA

EC-3, 11 JUN 2026 to 09 JUL 2026

EC-3, 11 JUN 2026 to 09 JUL 2026