

WAAS CH 86514 W09A	APP CRS 095°	Rwy Idg TDZE Apt Elev	4502 760 763
--	------------------------	-----------------------------	---

RNAV (GPS) RWY 9

PUTNAM COUNTY (OWX)

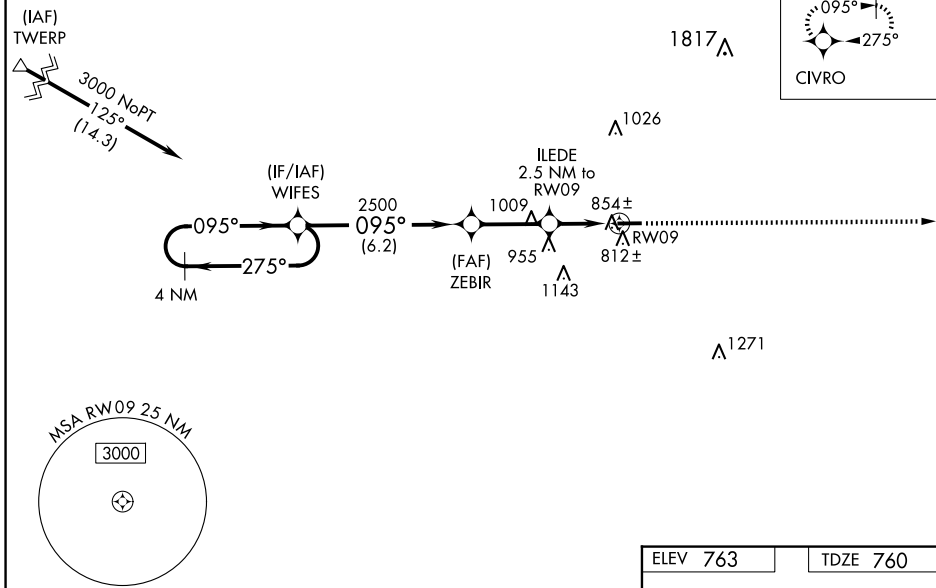
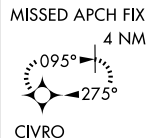
RNP APCH.

▼ For uncompensated Baro-VNAV systems, LNAV/VNAV NA below -16°C or above 54°C.
▲ NA Rwy 9 helicopter visibility reduction below ¼ SM NA. Baro-VNAV and VDP NA when using Findlay altimeter setting. When local altimeter setting not received, use Findlay altimeter setting and increase all DAs/MDAs 40 feet.

MISSED APPROACH:
Climb to 3000 direct CIVRO and hold.

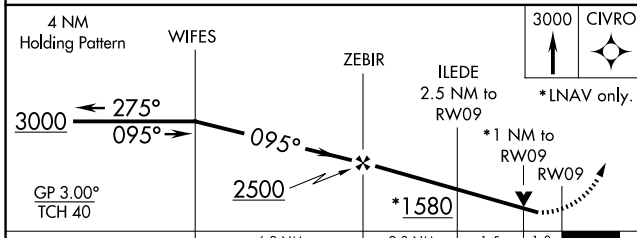
AWOS-3 120.525	TOLEDO APP CON 120.8 317.55	UNICOM 122.7 (CTAF) 0
--------------------------	---------------------------------------	---------------------------------

Procedure NA for arrivals at TWERP on V8-422 westbound.



EC-2, 11 JUN 2026 to 09 JUL 2026

EC-2, 11 JUN 2026 to 09 JUL 2026



ELEV 763	TDZE 760
----------	----------

095°

4500 X 75

799 ±

27

REIL Rwy 9 and 27 **0**
MIRL Rwy 9-27 **0**

CATEGORY	A	B	C	D
LPV DA	1048-1	288 (300-1)		NA
LNAV/ VNAV DA	1147-1 ½	387 (400-1 ½)		NA
LNAV MDA	1120-1	360 (400-1)		NA
CIRCLING	1200-1 437 (500-1)	1220-1 457 (500-1)		NA