

APP CRS <b>182°</b>	Rwy Ldg TDZE Apt Elev	<b>5005</b> <b>319</b> <b>324</b>
------------------------	-----------------------------	---

# RNAV (GPS) RWY 18

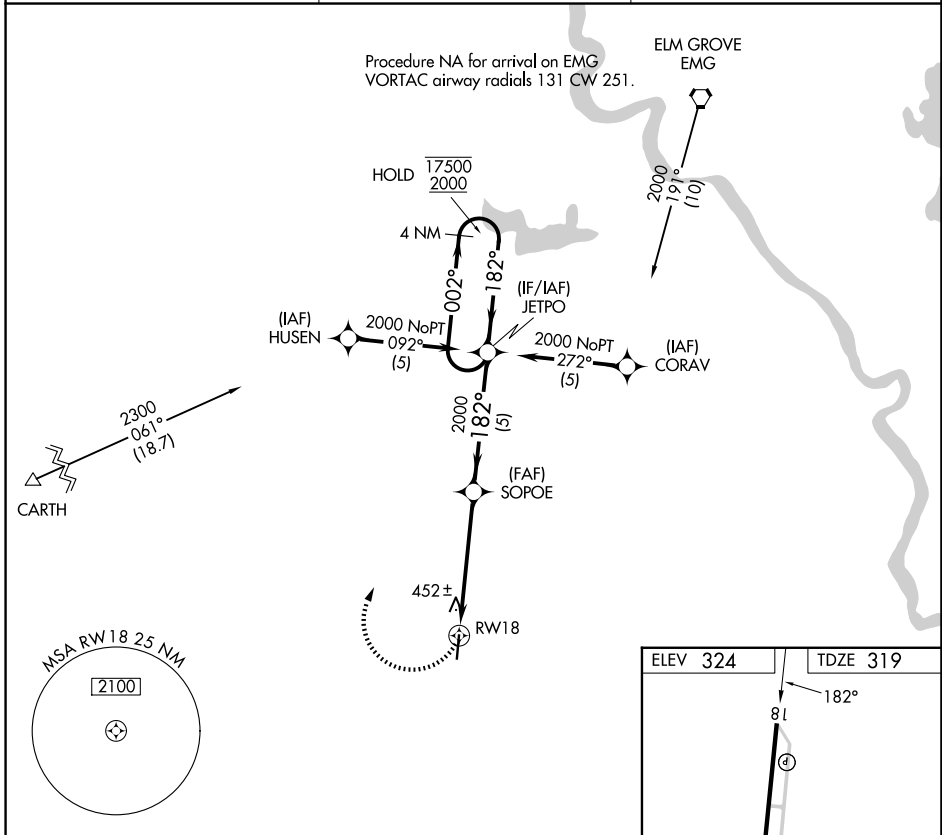
C E 'RUSTY' WILLIAMS (3F'3)

**RNP APCH - GPS.**

Procedure NA at night. Rwy 18 helicopter visibility reduction below 1 SM NA.  
 When local altimeter setting not received, use SHV altimeter setting and increase all MDAs 80 feet and LNAV visibility Cat C ¼ SM and Circling visibility Cat C ½ SM.

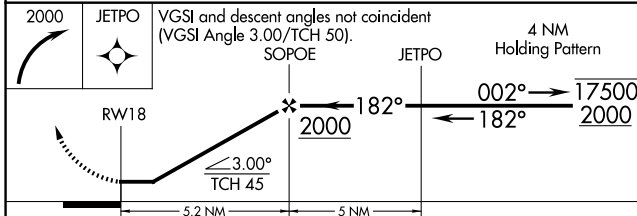
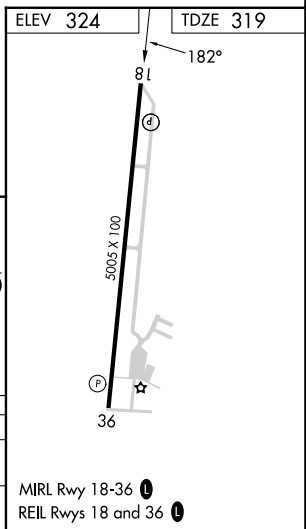
MISSED APPROACH: Climbing right turn to 2000 direct JETPO and hold.

AWOS-3PT <b>119.125</b>	SHREVEPORT APP CON ★ <b>119.9 335.55</b>	UNICOM <b>122.8 (CTAF) 0</b>
----------------------------	---	---------------------------------



SC-4, 11 JUN 2026 to 09 JUL 2026

SC-4, 11 JUN 2026 to 09 JUL 2026



CATEGORY	A	B	C	D
LNAV MDA	780-1 461 (500-1)		780-1 <sup>3</sup> / <sub>8</sub> 461 (500-1 <sup>3</sup> / <sub>8</sub> )	NA
CIRCLING	880-1 556 (600-1)		920-1 <sup>1</sup> / <sub>2</sub> 596 (600-1 <sup>1</sup> / <sub>2</sub> )	NA