

WAAS CH <b>69403</b> W15A	APP CRS <b>148°</b>	Rwy Ldg TDZE Apt Elev	<b>4000</b> <b>361</b> <b>367</b>
---------------------------------	------------------------	-----------------------------	---

# RNAV (GPS) RWY 15

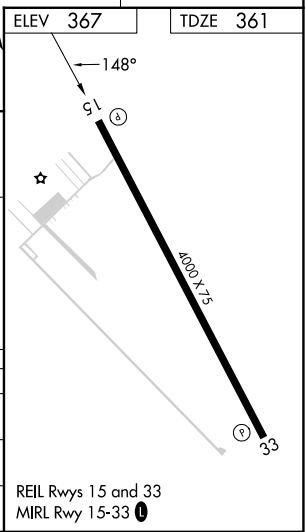
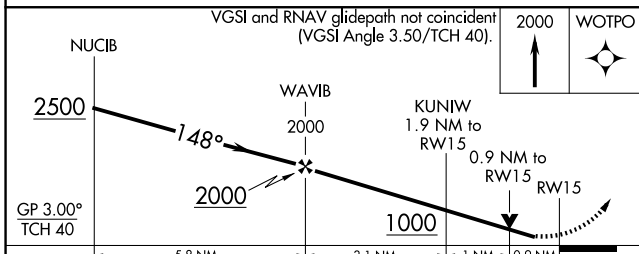
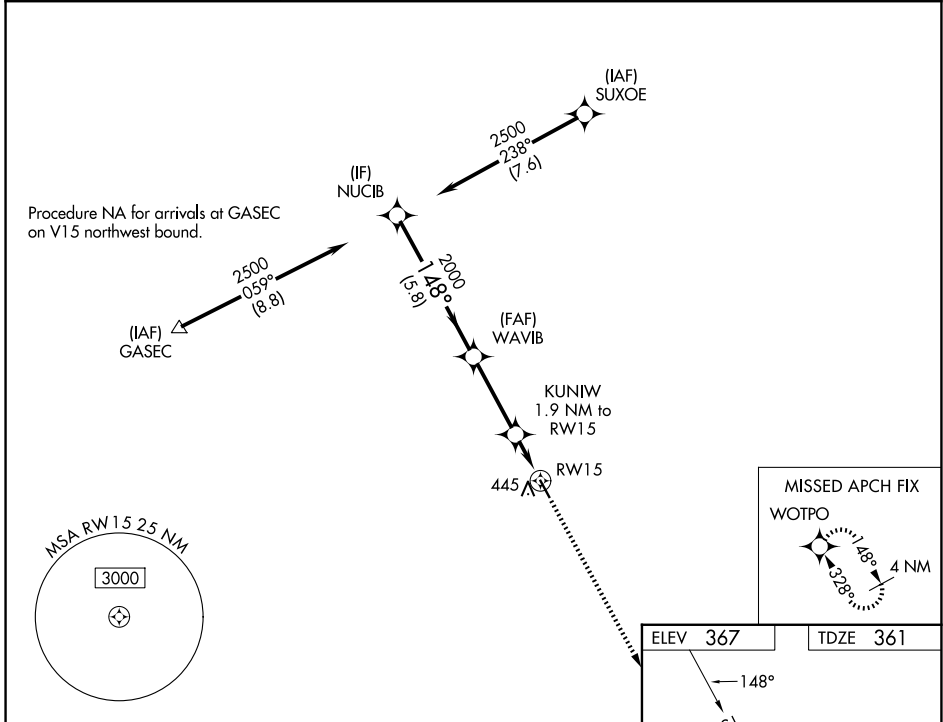
COULTER FLD (CFD)

RNP APCH - GPS.

▼ Rwy 15 helicopter visibility reduction below 3/4 SM NA. Baro-VNAV NA and VDP NA when using CLL altimeter setting. When local altimeter setting not received, use CLL altimeter setting and increase LPV and LNAV/VNAV DA to 661 feet; increase all MDAs 40 feet.

▲ MISSED APPROACH: Climb to 2000 direct WOTPO and hold.

AWOS-3PT <b>125.975</b>	HOUSTON APP CON <b>134.3 360.85</b>	UNICOM <b>123.0 (CTAF)</b>
----------------------------	--	-------------------------------



CATEGORY	A	B	C	D
LPV DA	636-1	275 (300-1)		NA
LNAV/VNAV DA	636-1	275 (300-1)		NA
LNAV MDA	720-1	359 (400-1)		NA

SC-5, 11 JUN 2026 to 09 JUL 2026

SC-5, 11 JUN 2026 to 09 JUL 2026