

| | | |
|-------------|----------|------------|
| APP CRS | Rwy Ldg | N/A |
| 044° | TDZE | N/A |
| | Apt Elev | 157 |

RNAV (GPS)-B

FIREBAUGH (F34)

RNP APCH.

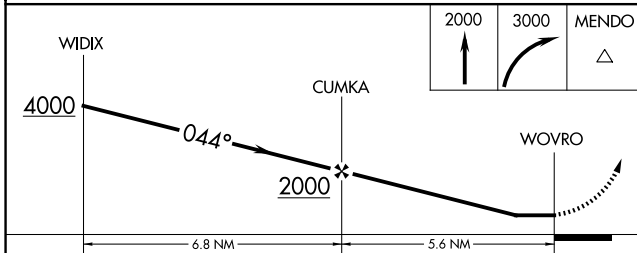
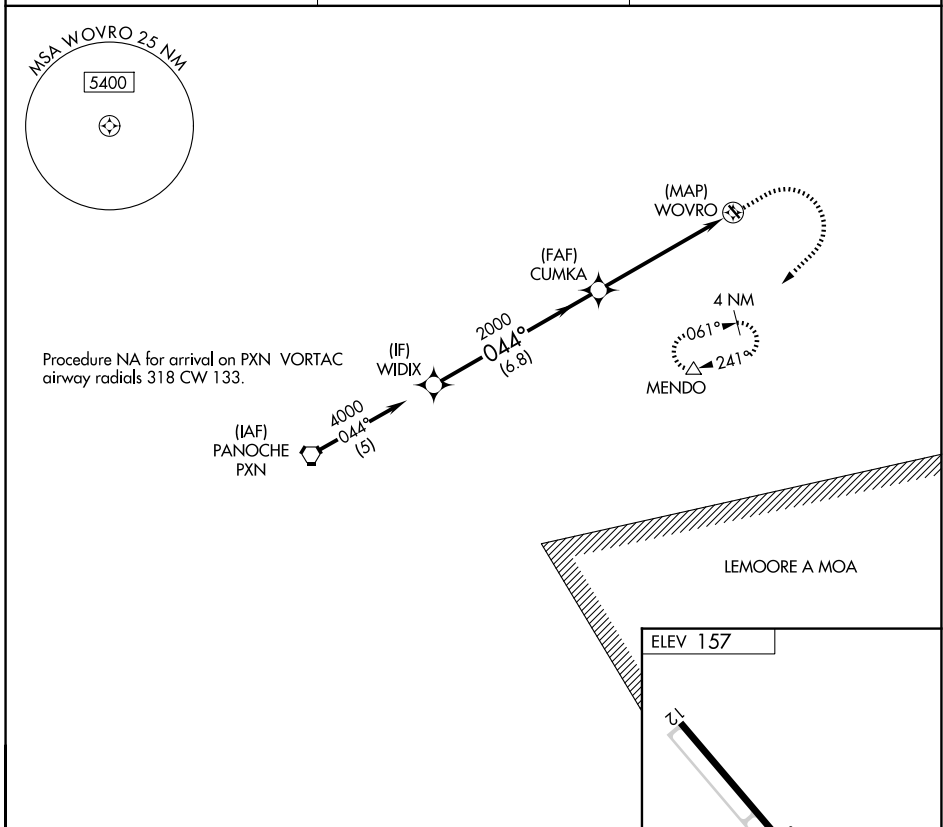
▽
▲ NA Procedure NA at night. Use Madera altimeter setting, when not received, use Merced Yosemite Rgnl altimeter setting.

MISSED APPROACH: Climb to 2000 then climbing right turn to 3000 direct MENDO and hold.

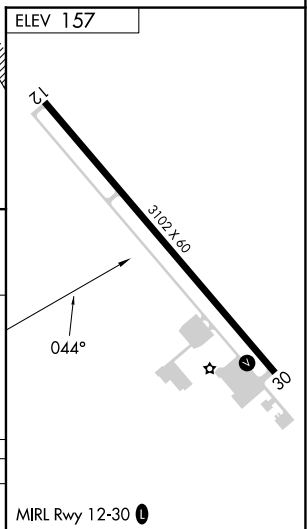
MAE ASOS
134.725

NORCAL APP CON
120.95 269.45

CTAF
122.9



| | | | | |
|----------|-------|-------------|----|---|
| CATEGORY | A | B | C | D |
| CIRCLING | 740-1 | 583 (600-1) | NA | |



SW-2, 11 JUN 2026 to 09 JUL 2026

SW-2, 11 JUN 2026 to 09 JUL 2026