

APP CRS	Rwy Ldg	3795
097°	TDZE	881
	Apt Elev	895

RNAV (GPS) RWY 10

MARLETTE TOWNSHIP (77G)

RNP APCH - GPS.

▽ Rwy 10 helicopter visibility reduction below 1 SM NA. Straight-in Rwy 10 NA at night, Circling Rwy 10, 19 NA at night. Use Caro altimeter setting, when not received, use Bad Axe altimeter setting and increase all MDAs 20 feet and LNAV visibility Cat C/D ½ SM.

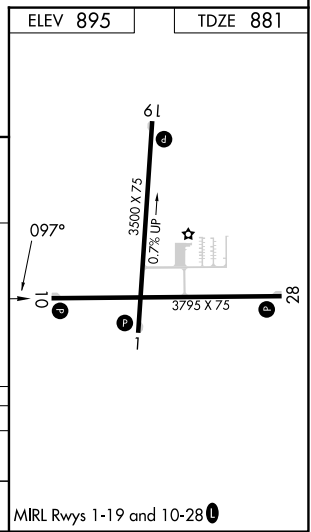
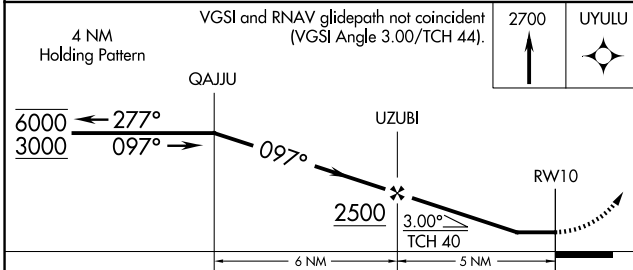
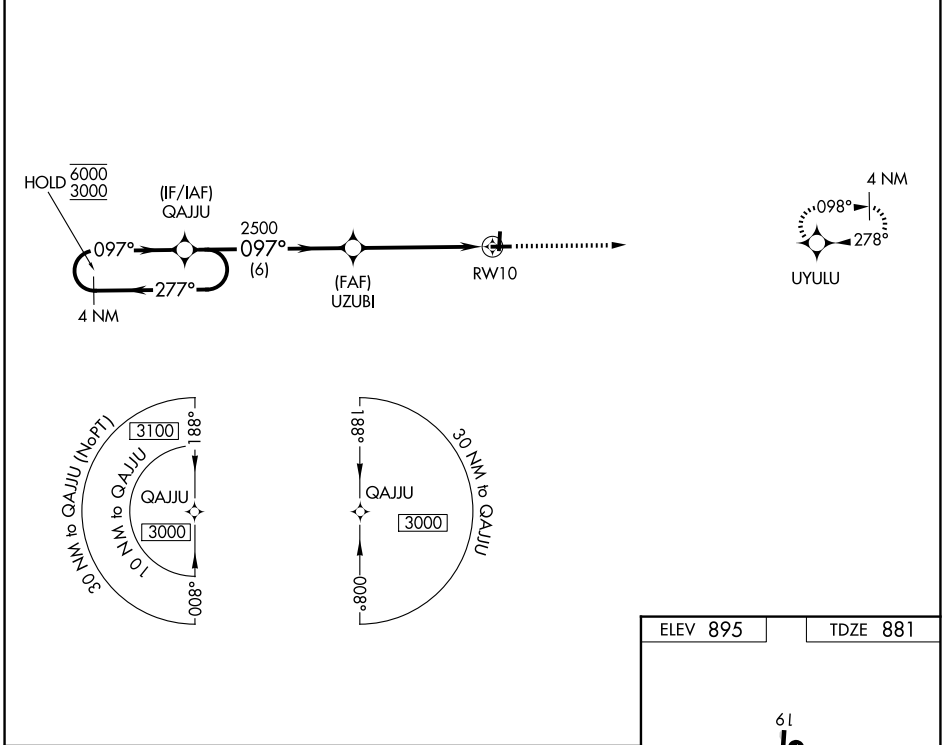
▲ NA

MISSED APPROACH:
Climb to 2700 direct UYULU and hold.

CFS AWOS-3P
119.275

CLEVELAND CENTER
127.7 290.425

UNICOM
122.8 (CTAF) 0



CATEGORY	A	B	C	D
LNAV MDA	1420-1	539 (600-1)	1420-1½	539 (600-1½)
CIRCLING	1460-1	565 (600-1)	1460-1½	1560-2 665 (700-2)

MIRL Rwy 1-19 and 10-28 0

EC-1, 11 JUN 2026 to 09 JUL 2026

EC-1, 11 JUN 2026 to 09 JUL 2026