

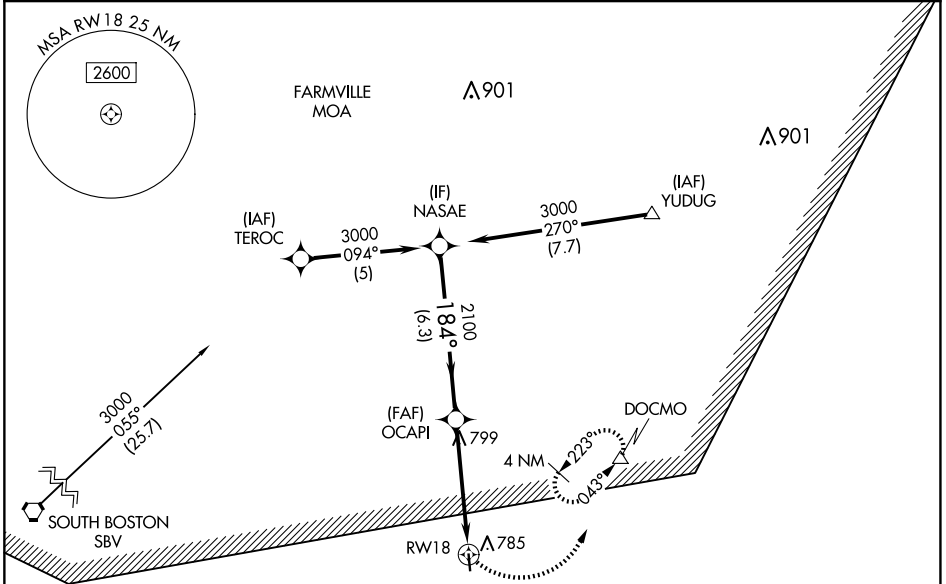
APP CRS	Rwy Idg	3400
184°	TDZE	503
	Apt Elev	503

RNAV (GPS) RWY 18

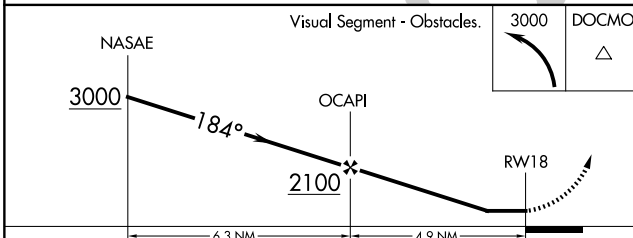
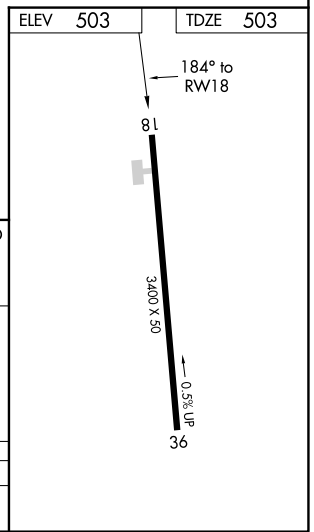
CHASE CITY MUNI (CXE)

RNP APCH - GPS.		MISSED APPROACH: Climbing left turn to 3000 direct DOCMO and hold, continue climb-in-hold to 3000.
<p>⚠ Procedure NA at night. Rwy 18 helicopter visibility reduction below 1 SM NA.</p>		

AWOS-3 121.225	WASHINGTON CENTER 118.75 377.1	CTAF 122.9
--------------------------	--	----------------------



Procedure NA for arrival on SBV VORTAC airway radials 032 CW 086.



CATEGORY	A	B	C	D
LNAV MDA	1520-3	1017 (1100-3)	NA	

NE-3, 11 JUN 2026 to 09 JUL 2026

NE-3, 11 JUN 2026 to 09 JUL 2026