

LOC/DME I-EKY <b>111.75</b> Chan <b>54</b> (Y)	APP CRS <b>053°</b>	Rwy Ldg <b>6007</b> TDZE <b>700</b> Apt Elev <b>700</b>
--	------------------------	---

# ILS or LOC RWY 5

BESSEMER NTL (EKY)

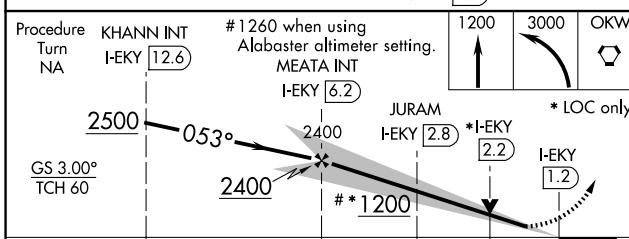
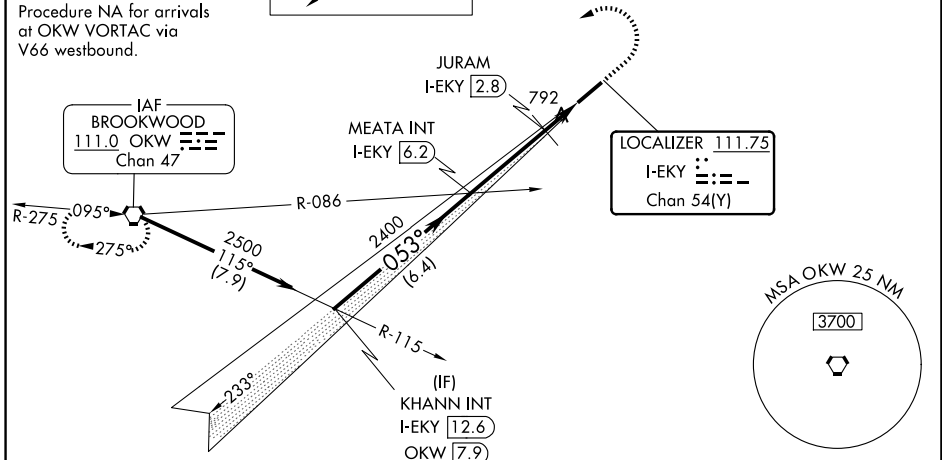
**NA** When local altimeter setting not received, use Alabaster altimeter setting and increase DA 41 feet, increase all MDAs 60 feet; increase S-LOC 5 Cat C visibility  $\frac{1}{8}$  SM and Cat D visibility  $\frac{1}{4}$  SM, increase Circling Cat C visibility  $\frac{1}{8}$  SM and Cat D visibility  $\frac{1}{4}$  SM, increase JURAM fix S-LOC 5 Cat C visibility  $\frac{1}{8}$  SM and Cat D visibility  $\frac{1}{4}$  SM; increase Circling Cat D visibility  $\frac{1}{4}$  SM. VDP NA with Alabaster altimeter setting.

MISSED APPROACH: Climb to 1200 then climbing left turn to 3000 direct OKW VORTAC and hold.

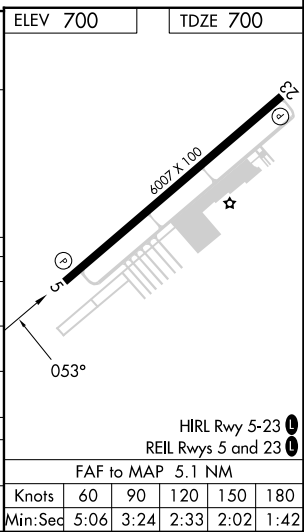
AWOS-3PT <b>118.825</b>	BIRMINGHAM APP CON <b>124.9 351.85</b>	CLNC DEL <b>123.75</b>	UNICOM <b>123.0</b> (CTAF) <b>0</b>
----------------------------	---	---------------------------	--

ALTERNATE MISSED  
APCH FIX  
VULCAN  
VUZ  
114.4  
Chan 91

Procedure NA for arrivals at OKW VORTAC via V66 westbound.



CATEGORY	A	B	C	D
S-ILS 5		900- $\frac{3}{4}$	200 (200- $\frac{3}{4}$ )	
S-LOC 5	1200-1	500 (500-1)	1200- $\frac{1}{8}$ 500 (500- $\frac{1}{8}$ )	1200- $\frac{1}{2}$ 500 (500- $\frac{1}{2}$ )
CIRCLING	1200-1	500 (500-1)	1220- $\frac{1}{2}$ 520 (600- $\frac{1}{2}$ )	1320-2 620 (700-2)
JURAM FIX MINIMUMS				
S-LOC 5	1100-1	400 (400-1)	1100- $\frac{1}{8}$ 400 (400- $\frac{1}{8}$ )	1100- $\frac{1}{4}$ 400 (400- $\frac{1}{4}$ )
CIRCLING	1200-1	500 (500-1)	1220- $\frac{1}{2}$ 520 (600- $\frac{1}{2}$ )	1320-2 620 (700-2)



SE-4, 11 JUN 2026 to 09 JUL 2026

SE-4, 11 JUN 2026 to 09 JUL 2026