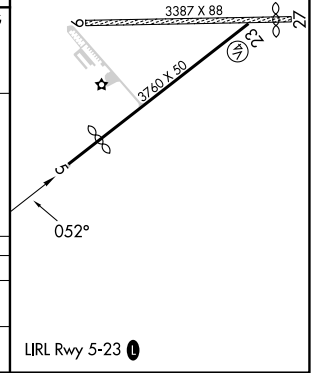
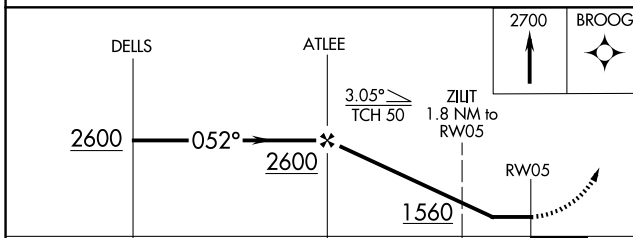
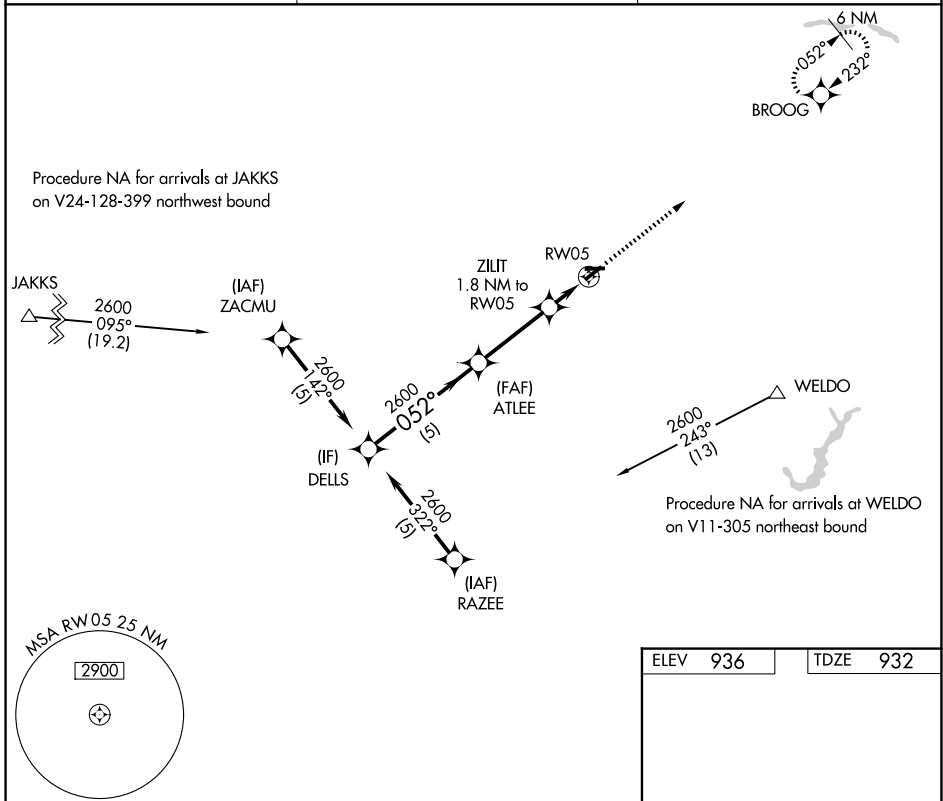


| | | |
|-------------|----------|-------------|
| APP CRS | Rwy Ldg | 3110 |
| 052° | TDZE | 932 |
| | Apt Elev | 936 |

RNAV (GPS) RWY 5

SHERIDAN (5I4)

| | | |
|--------------------------------|---|---|
| RNP APCH. | | MISSED APPROACH: Climb to 2700 direct BROOG and hold. |
| NA | Circling NA to Rws 9 and 27. Procedure NA at night. Rwy 5 helicopter visibility reduction below 1 SM NA. Use Indianapolis Exec altimeter setting. | |
| TYQ AWOS-3PT 120.725 | INDIANAPOLIS APP CON 124.65 317.8 | UNICOM 123.075 (CTAF) 0 |



| | | | | |
|----------|-----------------------|-----------------------|--|----|
| | ELEV 936 | | TDZE 932 | |
| CATEGORY | A | B | C | D |
| RNAV MDA | 1400-1 | 468 (500-1) | 1400-1 ³ / ₈ 468 (500-1 ³ / ₈) | NA |
| CIRCLING | 1460-1 524 (600-1) | 1480-1 544 (600-1) | 1500-1 ¹ / ₂ 564 (600-1 ¹ / ₂) | NA |

EC-2, 11 JUN 2026 to 09 JUL 2026

EC-2, 11 JUN 2026 to 09 JUL 2026