

|  |                        |   |             |
|--|------------------------|---|-------------|
| WAAS<br>CH <b>93825</b><br><b>W03A</b> | APP CRS<br><b>027°</b> | Rwy Idg<br>TDZE <b>36</b><br>Apt Elev <b>36</b> | <b>5500</b> |
|--|------------------------|---|-------------|

# RNAV (GPS) RWY 3

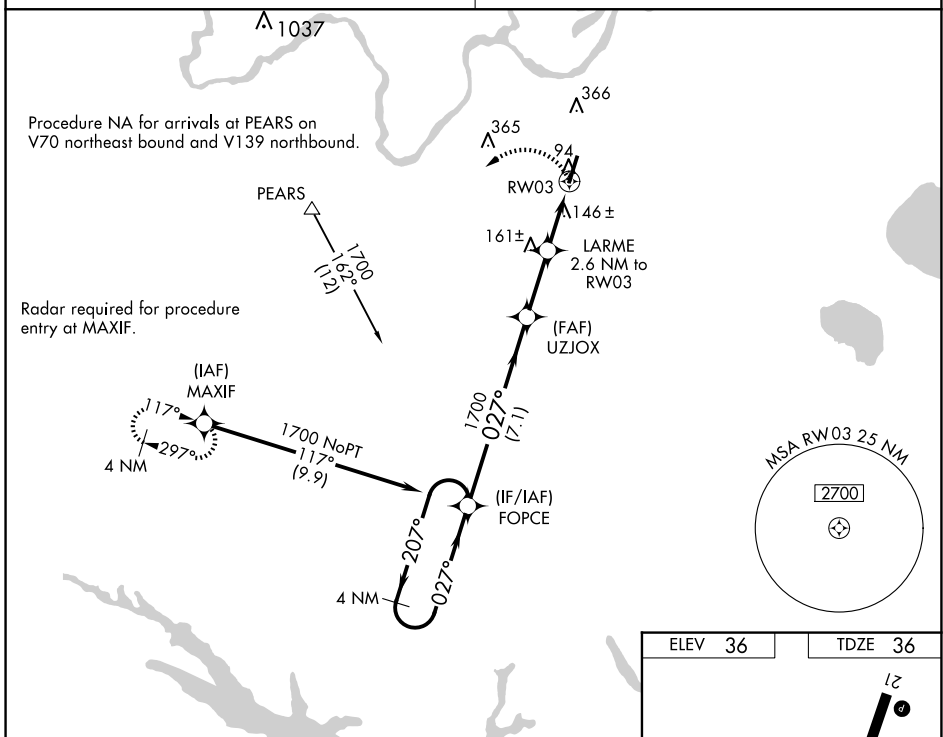
PLYMOUTH MUNI (PMZ)

**⚠** Use Northeastern Rgnl altimeter setting; when not received, use Coastal Carolina Rgnl altimeter setting and increase all MDA 80 feet; increase all Cat C visibilities 1/4 SM. When VGSi inop, procedure NA at night. DME/DME RNP-0.3 NA. Visibility reduction by helicopters NA.

**MISSED APPROACH:** Climbing left turn to 2000 direct MAXIF and hold.

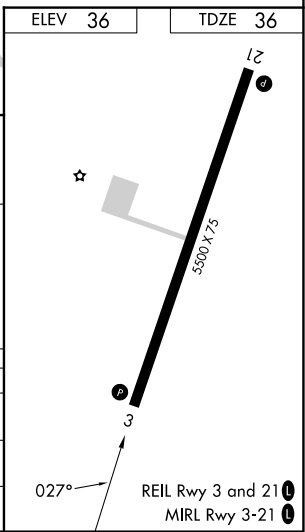
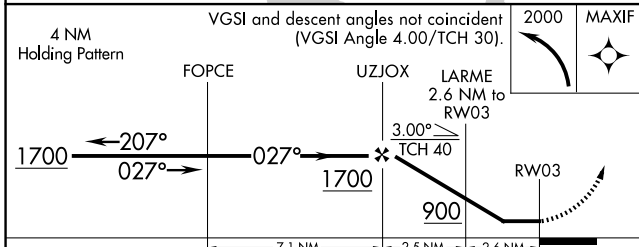
CHERRY POINT APP CON  
**119.35 377.175**

UNICOM  
**122.8 (CTAF)** **📻**



SE-2, 11 JUN 2026 to 09 JUL 2026

SE-2, 11 JUN 2026 to 09 JUL 2026



| CATEGORY | A                    | B                    | C                            | D  |
|----------|----------------------|----------------------|------------------------------|----|
| LP MDA   | 440-1                | 404 (500-1)          | 440-1 1/8<br>404 (500-1 1/8) | NA |
| LNAV MDA | 460-1                | 424 (500-1)          | 460-1 1/4<br>424 (500-1 1/4) | NA |
| CIRCLING | 520-1<br>484 (500-1) | 720-1<br>684 (700-1) | 720-2<br>684 (700-2)         | NA |