

| | | | |
|--|------------------------|-----------------------------|---|
| WAAS CH 93936 W16A | APP CRS 160° | Rwy Ldg TDZE Apt Elev | 5000 1257 1266 |
|--|------------------------|-----------------------------|---|

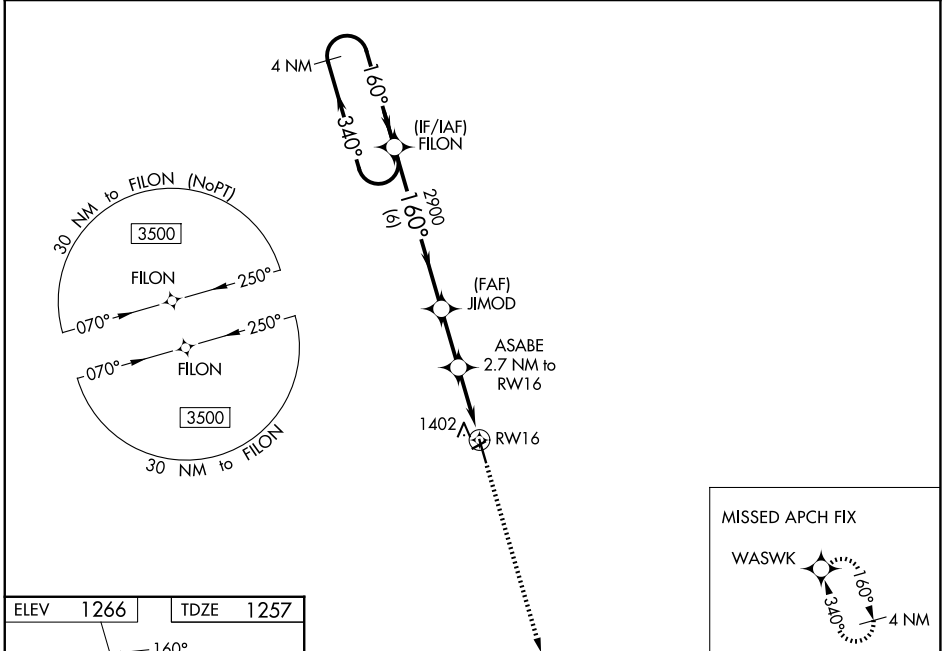
RNAV (GPS) RWY 16

GWINNER/ROGER MELROE FLD (GWR)

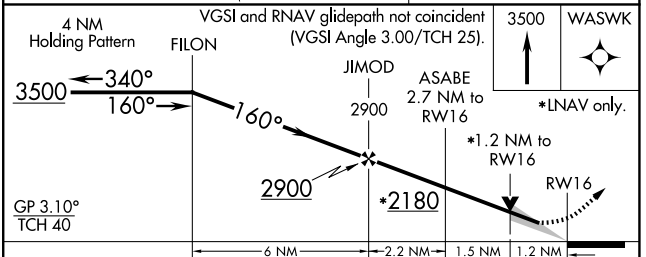
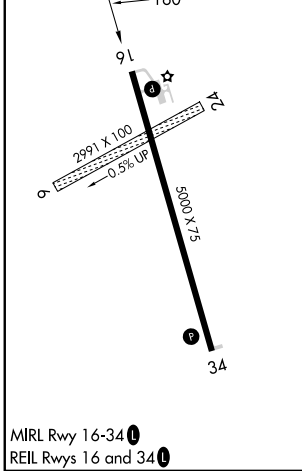
⚠ For uncompensated Baro-VNAV systems, LNAV/VNAV NA below -17°C (2°F) or above 47°C (117°F). DME/DME RNP-0.3 NA. Circling NA to Rwy's 6 and 24. Baro-VNAV and VDP NA when using Fargo altimeter setting. When local altimeter setting not received, use Fargo altimeter setting: increase LPV DA to 1683 feet and visibility ¾ SM, and LNAV/VNAV DA to 1803 feet and visibility ¾ SM; increase all MDAs 180 feet and visibility LNAV Cat C/D ¾ SM, and Circling Cat C ¾ SM, and Circling Cat D ½ SM.

MISSED APPROACH:
Climb to 3500 direct WASWK and hold.

| | | |
|--------------------------|---|---------------------------------|
| AWOS-3 118.325 | MINNEAPOLIS CENTER 127.35 278.3 | UNICOM 122.7 (CTAF) 0 |
|--------------------------|---|---------------------------------|



| | |
|-----------|-----------|
| ELEV 1266 | TDZE 1257 |
|-----------|-----------|



| CATEGORY | A | B | C | D |
|--------------|--------------------|---|--|---|
| LPV DA | 1507-1 | | 250 (300-1) | |
| LNAV/VNAV DA | 1627-1¼ | | 370 (400-1¼) | |
| LNAV MDA | 1660-1 403 (400-1) | | 1660-1⅛ 403 (400-1⅛) | |
| CIRCLING | 1780-1 514 (600-1) | | 1840-1½ 2060-2½ 574 (600-1½) 794 (800-2½) | |

NC-1, 11 JUN 2026 to 09 JUL 2026

NC-1, 11 JUN 2026 to 09 JUL 2026