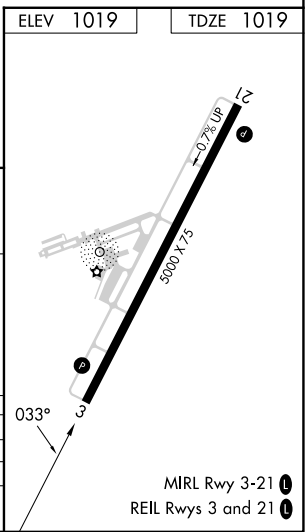
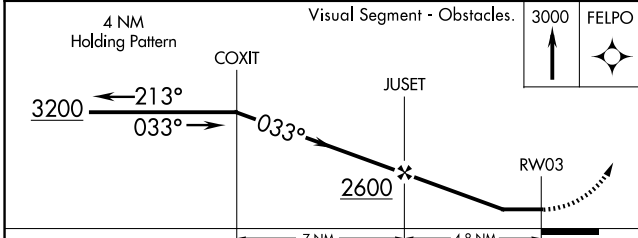
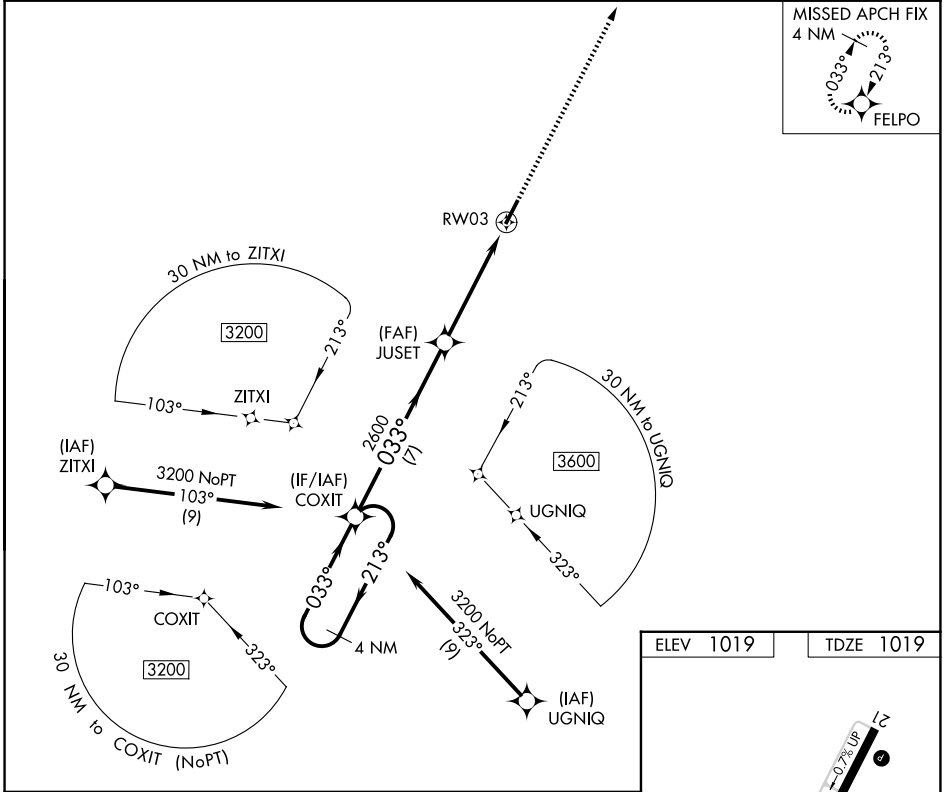


WAAS CH <b>81933</b> <b>W03A</b>	APP CRS <b>033°</b>	Rwy Ldg TDZE Apt Elev	<b>5000</b> <b>1019</b> <b>1019</b>
--	------------------------	-----------------------------	---

# RNAV (GPS) RWY 3

MOUNT STERLING/MONTGOMERY COUNTY (IOB)

DME/DME RNP-0.3 NA. When local altimeter setting not received, use Lexington altimeter setting and increase all MDA 80 feet and all visibilities ¼ mile. Helicopter visibility reduction below ¾ SM NA.		MISSED APPROACH: Climb to 3000 direct FELPO and hold.	
AWOS-3 <b>120.675</b>	LEXINGTON APP CON <b>120.15 259.3</b>	GCO <b>121.72</b>	CTAF <b>122.8 0</b>



CATEGORY	A	B	C	D
LP MDA	1540-1	521 (600-1)	1540-1½	521 (600-1½)
LNAV MDA	1560-1	541 (600-1)	1560-1¾	541 (600-1¾)
CIRCLING	1560-1	541 (600-1)	1740-2 721 (800-2)	1740-2¼ 721 (800-2¼)

SE-1, 11 JUN 2026 to 09 JUL 2026

SE-1, 11 JUN 2026 to 09 JUL 2026