

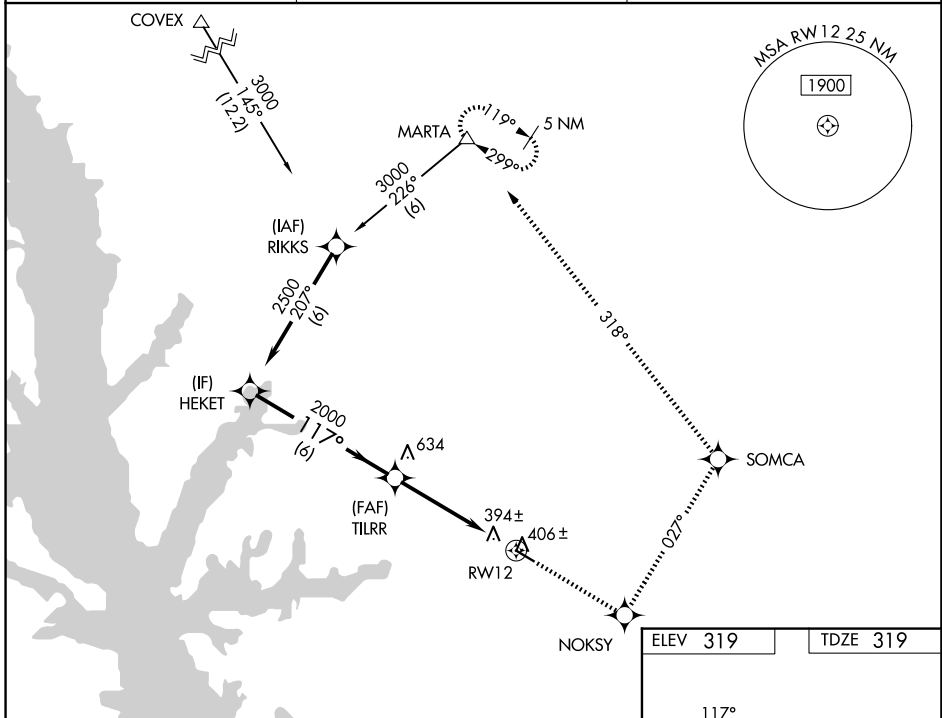
WAAS CH <b>78015</b> <b>W12A</b>	APP CRS <b>117°</b>	Rwy Ldg <b>4402</b> TDZE <b>319</b> Apt Elev <b>319</b>
--	------------------------	---

# RNAV (GPS) RWY 12

HART (3R4)

RNP APCH.	Baro-VNAV NA. Use Fort Polk altimeter setting; when not received, use Natchitoches altimeter setting; increase LPV DA to 715 feet, LNAV/VNAV DA to 767 feet, and all MDA 20 feet, and increase LPV visibility all Cats ¼ SM.	MISSED APPROACH: Climb to 4500 direct NOKSY and left turn via track 027° to SOMCA and left turn via track 318° to MARTA and hold.
-----------	--	---

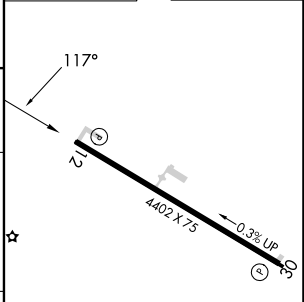
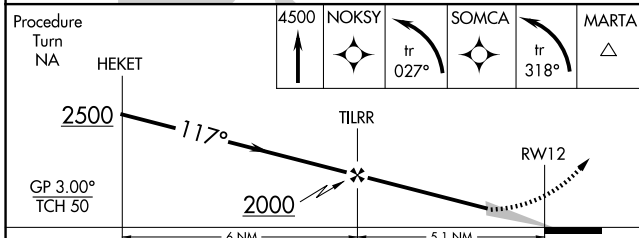
MAKS APP CON <b>123.7 261.3</b>	GCO <b>135.075</b>	UNICOM <b>122.8 (CTAF)</b>
------------------------------------	-----------------------	-------------------------------



SC-4, 11 JUN 2026 to 09 JUL 2026

SC-4, 11 JUN 2026 to 09 JUL 2026

ELEV 319	TDZE 319
----------	----------



CATEGORY	A	B	C	D
LPV DA	713-1¼ 394 (400-1¼)			NA
LNAV/VNAV DA	765-1½ 446 (500-1½)			NA
LNAV MDA	820-1 501 (600-1)		820-1½ 501 (600-1½)	NA
CIRCLING	940-1 621 (700-1)		1280-3 961 (1000-3)	NA

REIL Rwy 12 and 30

MIRL Rwy 12-30