

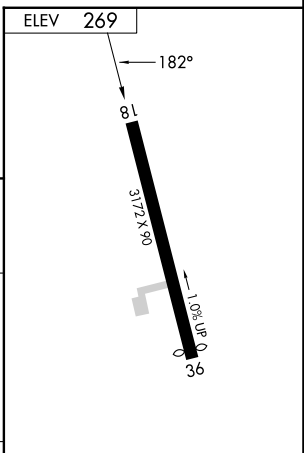
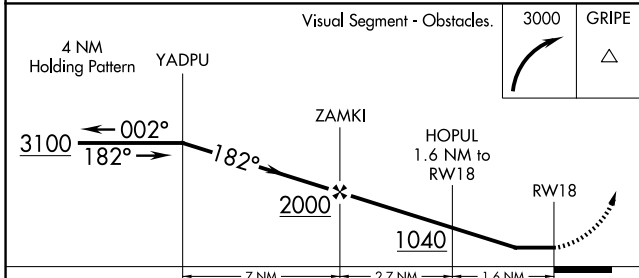
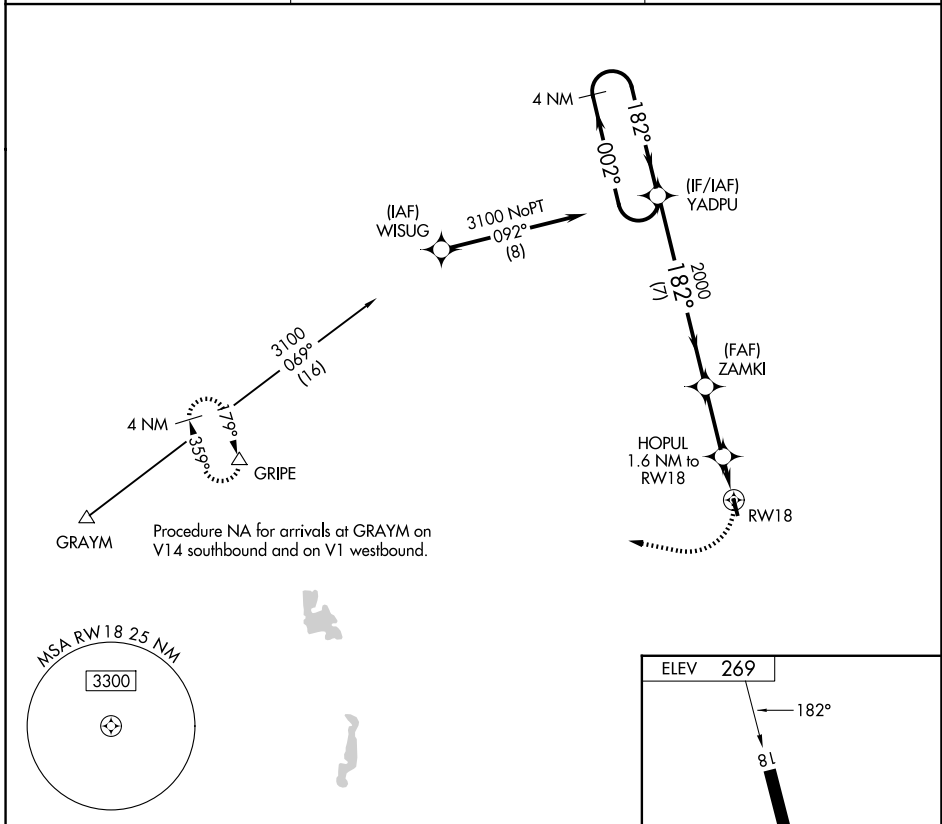
APP CRS	Rwy Ldg	3172
182°	TDZE	N/A
	Apt Elev	269

RNAV (GPS)-A

HOPEDALE INDUSTRIAL PARK (1B6)

RNP APCH.	Use Pawtucket altimeter setting; when not received, procedure NA. Procedure NA at night. Rwy 18 helicopter visibility reduction below 1 SM NA.	MISSED APPROACH: Climbing right turn to 3000 direct GRIPE and hold.
-----------	---	---

SFZ AWOS-3 120.775	BRADLEY APP CON 119.0	UNICOM 122.8 (CTAF)
------------------------------	---------------------------------	-------------------------------



CATEGORY	A	B	C	D
CIRCLING	880-1 611 (700-1)	980-1 711 (800-1)	1100-2½ 831 (900-2½)	NA

LIRL Rwy 18-36

NE-1, 11 JUN 2026 to 09 JUL 2026

NE-1, 11 JUN 2026 to 09 JUL 2026