

WAAS CH <b>97701</b> <b>W10A</b>	APP CRS <b>100°</b>	Rwy Ldg TDZE Apt Elev	<b>5003</b> <b>857</b> <b>868</b>
--	------------------------	-----------------------------	---

# RNAV (GPS) RWY 10

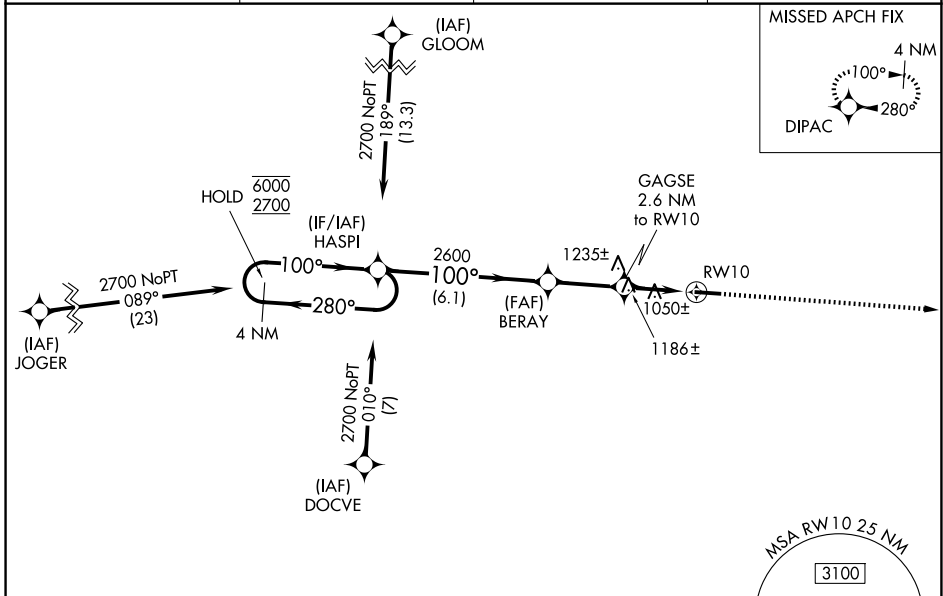
FAIRFIELD COUNTY (L.H.Q)

RNP APCH - GPS.

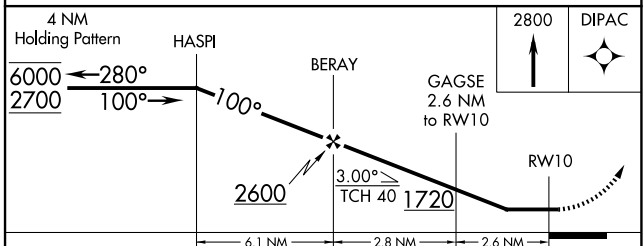
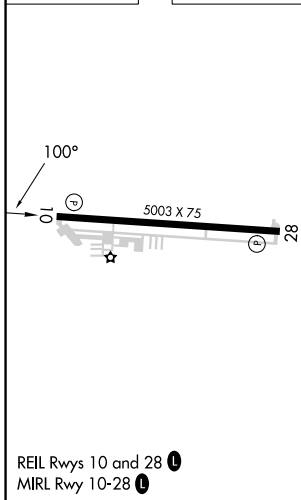
**⚠** Rwy 10 helicopter visibility reduction below 3/4 SM NA. When local altimeter setting not received, use Rickenbacker Intl altimeter setting and increase all MDAs 60 feet and LNAV visibility Cat C 1/8 SM, and Circling visibility Cat C 1/4 SM. When Circling Rwy 28 at night, operational VGSI required, remain on or above VGSI glidepath until threshold.

**MISSED APPROACH:**  
Climb to 2800 direct  
DIPAC and hold.

ASOS <b>118.375</b>	COLUMBUS APP CON <b>134.0 279.6</b>	CLNC DEL <b>121.65</b>	UNICOM <b>122.725 (CTAF) 0</b>
------------------------	--	---------------------------	-----------------------------------



ELEV <b>868</b>	TDZE <b>857</b>
-----------------	-----------------



CATEGORY	A	B	C	D
LP MDA	1300-1	443 (500-1)	1300-1 3/8 443 (500-1 3/8)	NA
LNAV MDA	1440-1	583 (600-1)	1440-1 3/4 583 (600-1 3/4)	NA
CIRCLING	1500-1 632 (700-1)	1540-1 672 (700-1)	1620-2 1/4 752 (800-2 1/4)	NA

EC-2, 11 JUN 2026 to 09 JUL 2026

EC-2, 11 JUN 2026 to 09 JUL 2026