

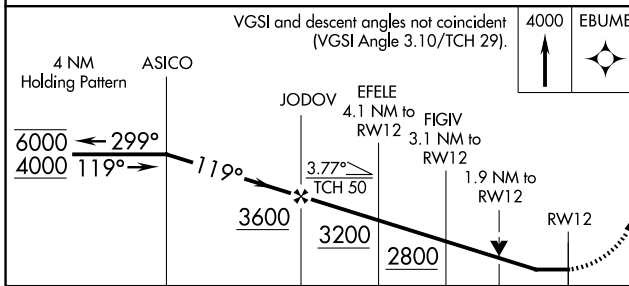
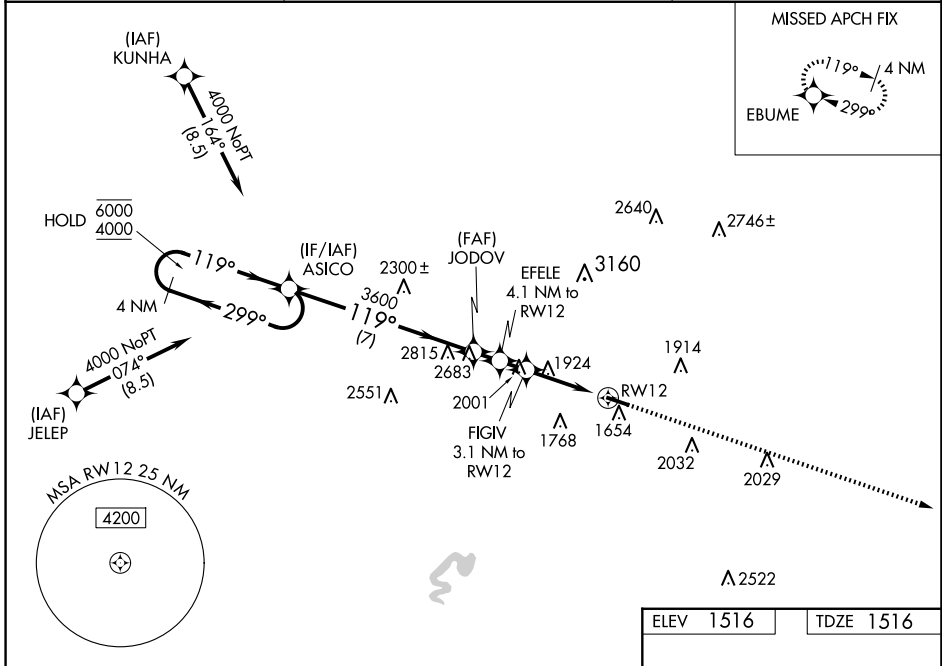
WAAS CH 53329 W12A	APP CRS 119°	Rwy Idg TDZE 1516 Apt Elev 1516
--	------------------------	---

RNAV (GPS) RWY 12

CLEARFIELD-LAWRENCE (FIG)

RNP APCH - GPS.		MISSED APPROACH: Climb to 4000 direct EBUME and hold.
<p>▼ Rwy 12 helicopter visibility reduction below ¼ SM NA. VDP NA when using Dubois altimeter setting. When local altimeter setting not received, use Dubois altimeter setting and increase all MDAs 100 feet; increase visibility LP Cat B ¼ SM and Cat C ⅓ SM, LNAV Cat C ½ SM and Circling Cat A and C ¼ SM.</p>		

ASOS 119.275	NEW YORK CENTER 134.8 338.3	UNICOM 122.725 (CTAF)
------------------------	---------------------------------------	---------------------------------



ELEV 1516	TDZE 1516
-----------	-----------

Diagram showing the final approach segment to RWY 12, including the runway dimensions (4499 x 75 ft) and a 30 ft width.

CATEGORY	A	B	C	D
LP MDA	2180-1	664 (700-1)	2180-1½ 664 (700-1½)	NA
LNAV MDA	2260-1 744 (800-1)	2260-1¼ 744 (800-1¼)	2260-2 744 (800-2)	NA
CIRCLING	2260-1 744 (800-1)	2260-1¼ 744 (800-1¼)	2340-2½ 824 (900-2½)	NA

NE-4, 11 JUN 2026 to 09 JUL 2026

NE-4, 11 JUN 2026 to 09 JUL 2026