

APP CRS	Rwy Idg	3280
134°	TDZE	1161
	Apt Elev	1174

RNAV (GPS) RWY 13

HARRISON COUNTY (8G6)

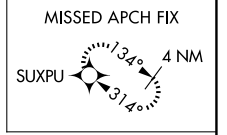
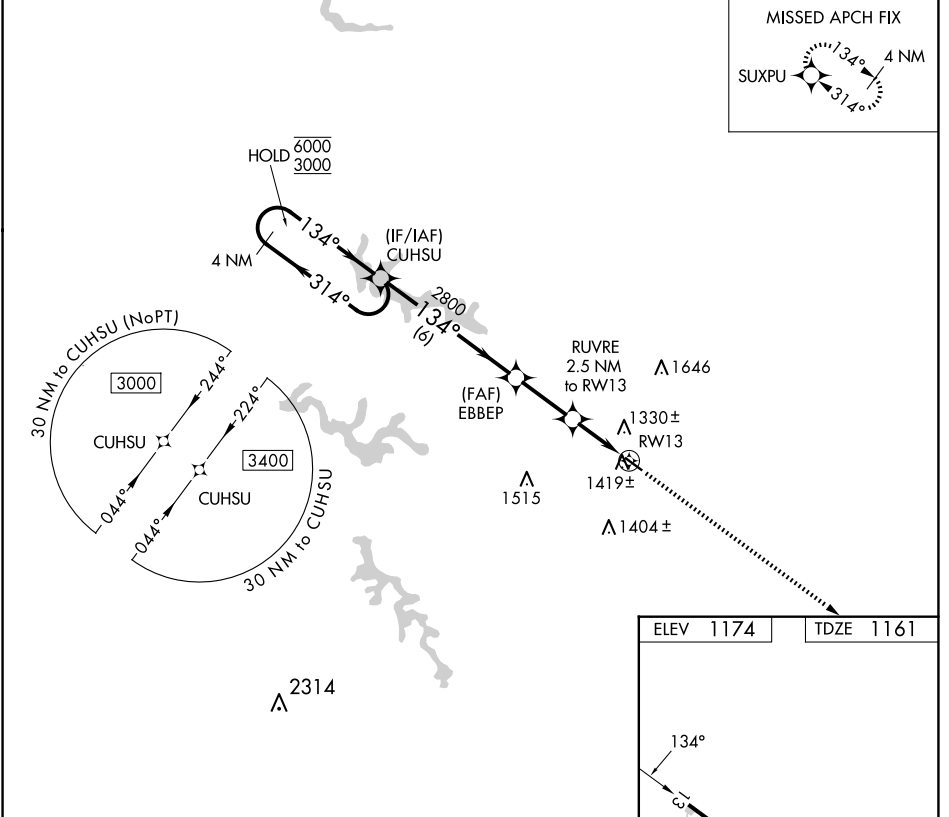
RNP APCH.

▽ Rwy 13 helicopter visibility reduction below 1 SM NA. Use Wheeling altimeter setting; when not received, use Washington altimeter setting and increase all MDA 40 feet. Procedure NA at night.

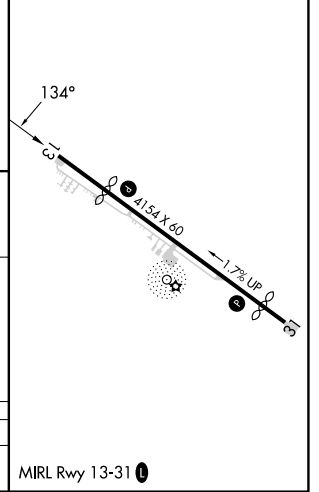
▲ NA

MISSED APPROACH: Climb to 3100 direct SUXPU and hold.

HLG ASOS 127.375	CLEVELAND CENTER 126.95 239.30	UNICOM 122.8 (CTAF) 0
----------------------------	--	---------------------------------



ELEV 1174	TDZE 1161
-----------	-----------



4 NM Holding Pattern	Visual Segment - Obstacles.	3100	SUXPU
6000 ← 314°	CUHSU	↑	✧
3000 → 134°	EBBEP		
	RUVRE 2.5 NM to RW13		
	2800		
	1980		
	6 NM	2.5 NM	2.5 NM
CATEGORY	A	B	C D
LNAV MDA	1720-1	559 (600-1)	NA

EC-2, 11 JUN 2026 to 09 JUL 2026

EC-2, 11 JUN 2026 to 09 JUL 2026