

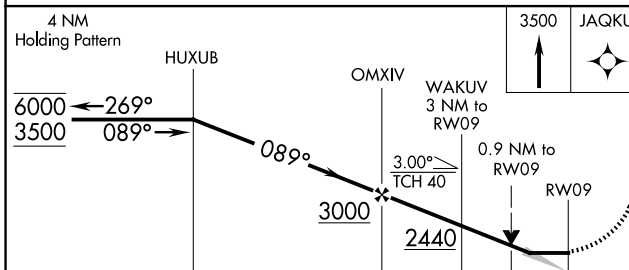
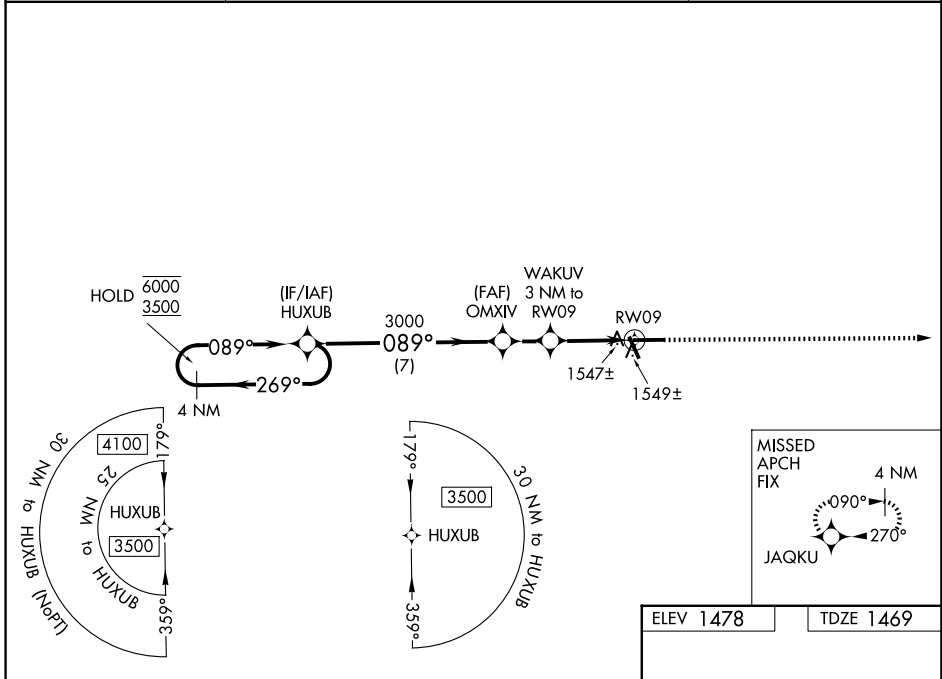
WAAS CH <b>99331</b> <b>W09A</b>	APP CRS <b>089°</b>	Rwy Ldg TDZE Apt Elev	<b>6000</b> <b>1469</b> <b>1478</b>
--	------------------------	-----------------------------	---

# RNAV (GPS) RWY 9

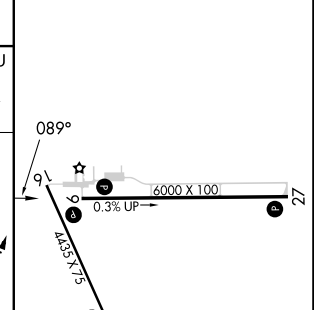
TAYLOR COUNTY (MDZ)

RNP APCH.	MISSED APPROACH: Climb to 3500 direct JAQKU and hold.
-----------	---

AWOS-3 <b>119.025</b>	MINNEAPOLIS CENTER <b>124.4 317.7</b>	UNICOM <b>122.8 (CTAF)</b>
--------------------------	--	-------------------------------



ELEV 1478	TDZE 1469
-----------	-----------



CATEGORY	A	B	C	D
LP MDA	1800-1	331 (400-1)		
RNAV MDA	1800-1	331 (400-1)		
CIRCLING	1900-1 422 (500-1)	2040-1 562 (600-1)	2040-1½ 562 (600-1½)	2180-2¼ 702 (800-2¼)

REIL Rwy 9, 27 and 34  
MRL Rwy 9-27 and 16-34

EC-3, 11 JUN 2026 to 09 JUL 2026

EC-3, 11 JUN 2026 to 09 JUL 2026