

APP CRS	Rwy Idg	4000
052°	TDZE	990
	Apt Elev	995

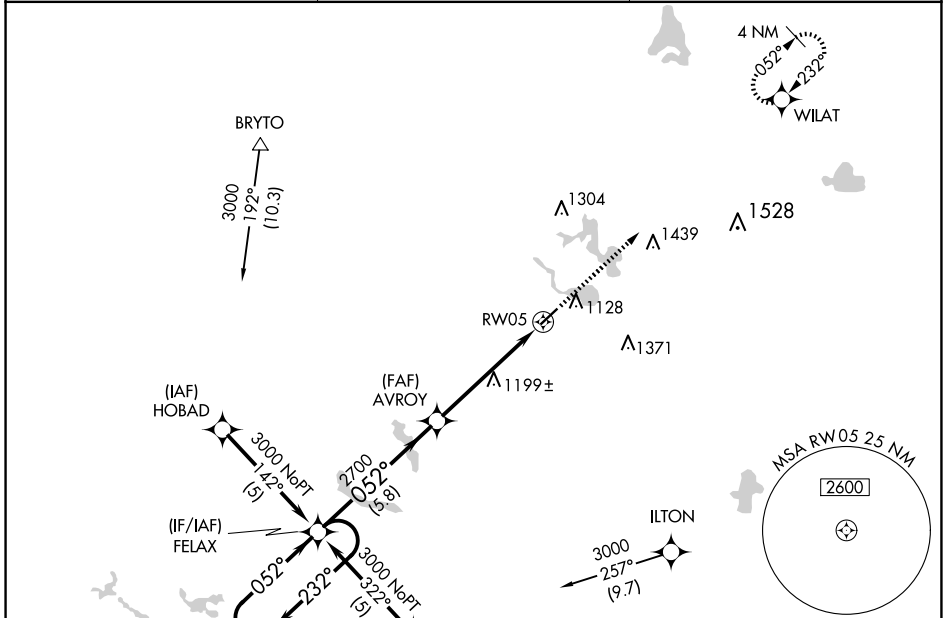
RNAV (GPS) RWY 5

TRI-STATE STEUBEN COUNTY (ANQ)

RNP APCH.
 ▼ For uncompensated Baro-VNAV systems, LNAV/VNAV NA below -16°C or above 54°C.
 ▲ NA Rwy 5 helicopter visibility reduction below ¾ SM NA.

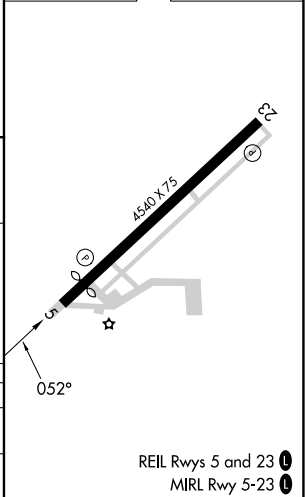
MISSED APPROACH:
 Climb to 3000 direct
 WILAT and hold.

AWOS-3 118.175	FORT WAYNE APP CON 127.2 284.6 (SW/NW) 132.15 284.6 (SE/NE)	UNICOM 123.075 (CTAF) 1
--------------------------	---	--



ELEV 995	D TDZE 990
----------	-------------------

4 NM Holding Pattern	FELAX	AVROY	3000	WILAT
3000	232°	052°	2700	*LNNAV only
GP 3.00°	052°	2700	*1.4 NM to RW05	RW05
TCH 40	5.8 NM	3.8 NM	1.4	
CATEGORY	A	B	C	D
LNNAV/VNAV DA	1474-1¾	484 (500-1¾)		NA
LNNAV MDA	1460-1	470 (500-1)	1460-1½ 470 (500-1½)	NA



REIL Rwy 5 and 23 **1**
 MIRL Rwy 5-23 **1**

EC-2, 11 JUN 2026 to 09 JUL 2026

EC-2, 11 JUN 2026 to 09 JUL 2026