

WAAS CH 93917 W14A	APP CRS 133°	Rwy Ldg TDZE Apt Elev	4600 984 987
----------------------------------------	------------------------	-----------------------------	-----------------------------------------

RNAV (GPS) RWY 14

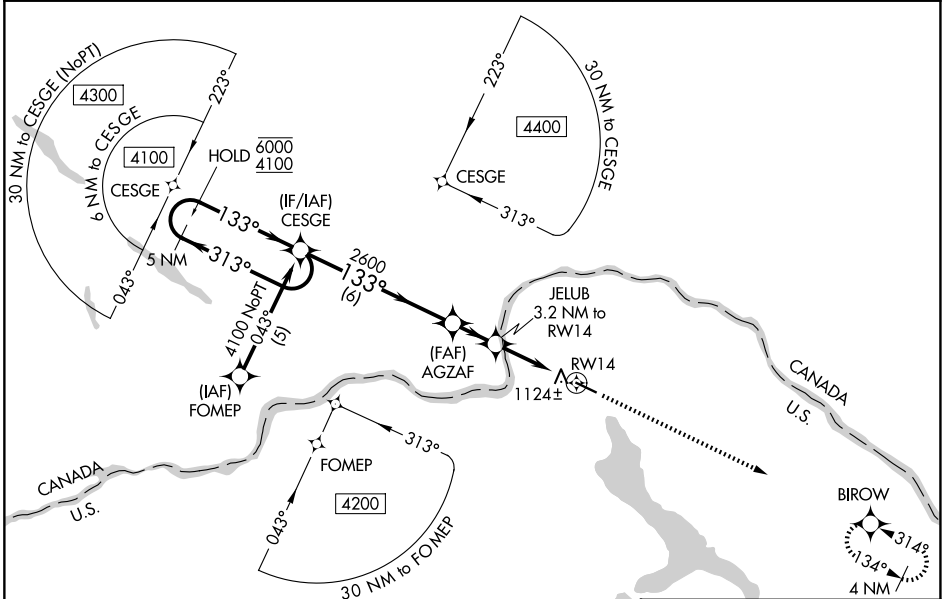
NORTHERN AROOSTOOK RGNL (FVE)

RNP APCH - GPS.

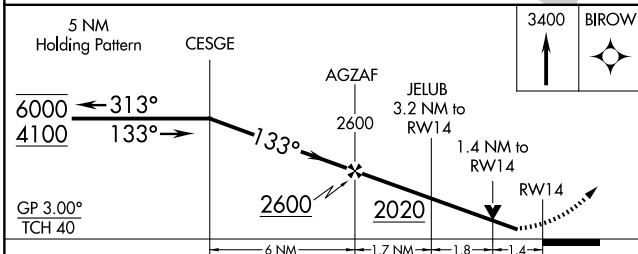
⚠ For uncompensated Baro-VNAV systems, LNAV/VNAV NA below -16°C or above 54°C. Rwy 14 helicopter visibility reduction below 3/4 SM NA. Baro-VNAV and VDP NA when using CAR altimeter setting. When local altimeter setting not received, use CAR altimeter setting and increase LPV DA to 1386 feet and all visibilities 1/2 SM; increase LNAV/VNAV DA to 1576 feet and all visibilities 3/8 SM; increase all MDAs 120 feet and LNAV visibility Cats C and D 3/8 SM, and Circling visibility Cats B, C and D 1/2 SM.

MISSED APPROACH:
Climb to 3400 direct BIROW and hold.

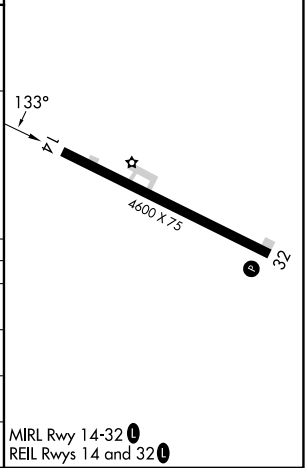
ASOS 135.725	BOSTON CENTER 124.75 239.05	UNICOM 122.7 (CTAF)
------------------------	---------------------------------------	-------------------------------



ELEV 987	TDZE 984
----------	----------



CATEGORY	A	B	C	D
LPV DA	1270-1 286 (300-1)			
LNAV/VNAV DA	1460-1 3/8 476 (500-1 3/8)			
LNAV MDA	1460-1	476 (500-1)	1460-1 3/8	476 (500-1 3/8)
CIRCLING	1560-1 573 (600-1)	1700-1 713 (800-1)	1840-2 1/2 853 (900-2 1/2)	1840-2 3/4 853 (900-2 3/4)



NE-1, 11 JUN 2026 to 09 JUL 2026

NE-1, 11 JUN 2026 to 09 JUL 2026