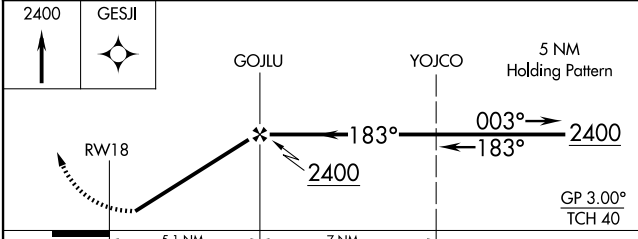
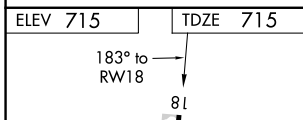
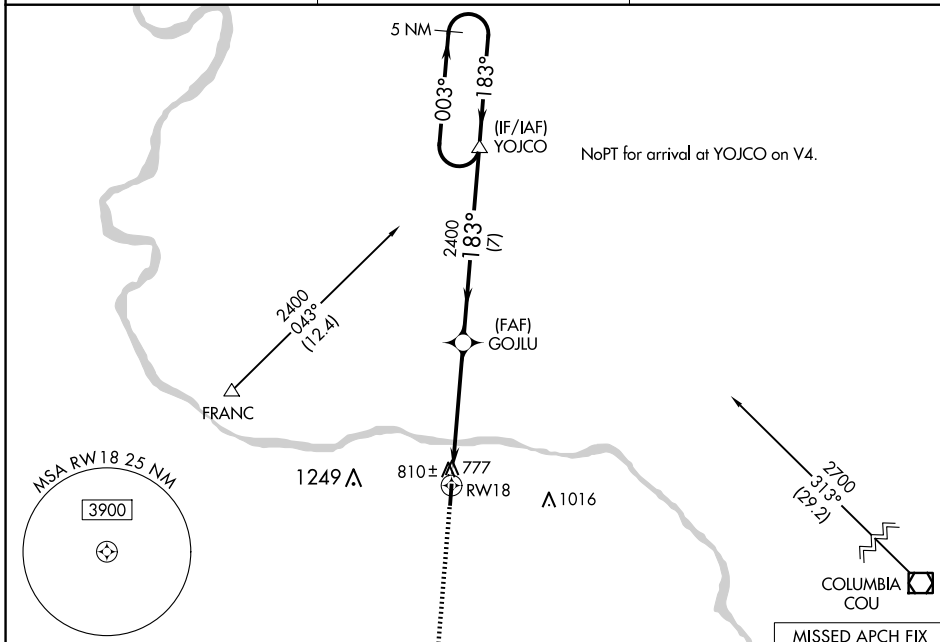


|  |                        |   |   |
|--|------------------------|---|---|
| WAAS<br>CH <b>72703</b><br><b>W18A</b> | APP CRS<br><b>183°</b> | Rwy Idg<br>TDZE <b>715</b><br>Apt Elev <b>715</b> | <b>4000</b><br><b>715</b><br><b>715</b> |
|--|------------------------|---|---|

# RNAV (GPS) RWY 18

JESSE VIERTEL MEML (V.E.R.)

|   |                                 |  |
|---|---------------------------------|--|
| RNP APCH.   |                                 | MISSED APPROACH: Climb to 2400 direct GESJ and hold. |
| <p>▼ NA Circling Rwy 36 NA at night. Rwy 18 helicopter visibility reduction below ¼ SM NA. Use Columbia Rgnl altimeter setting.</p> |                                 |  |
| AWOS-3PT<br><b>119.625</b>  | MIZZU APP CON<br><b>124.375</b> | UNICOM<br><b>122.7</b> (CTAF) <b>0</b>               |



| CATEGORY | A                     | B                     | C                       | D  |
|----------|-----------------------|-----------------------|-------------------------|----|
| LPV DA   | 1103-1½               |                       | 388 (400-1½)            | NA |
| LNAV MDA | 1140-1                | 425 (500-1)           | 1140-1¼<br>425 (500-1¼) | NA |
| CIRCLING | 1260-1<br>545 (600-1) | 1340-1<br>625 (700-1) | 1420-2<br>705 (800-2)   | NA |

REIL Rwy 18 and 36 **0**  
MIRL Rwy 18-36 **0**

NC-3, 11 JUN 2026 to 09 JUL 2026

NC-3, 11 JUN 2026 to 09 JUL 2026