

# RNAV (GPS) RWY 9

CPT BEN SMITH AIRFIELD/MONROE CITY (K52)

APP CRS	Rwy Ldg	<b>3515</b>
<b>091°</b>	TDZE	<b>737</b>
	Apt Elev	<b>737</b>

RNP APCH - GPS.

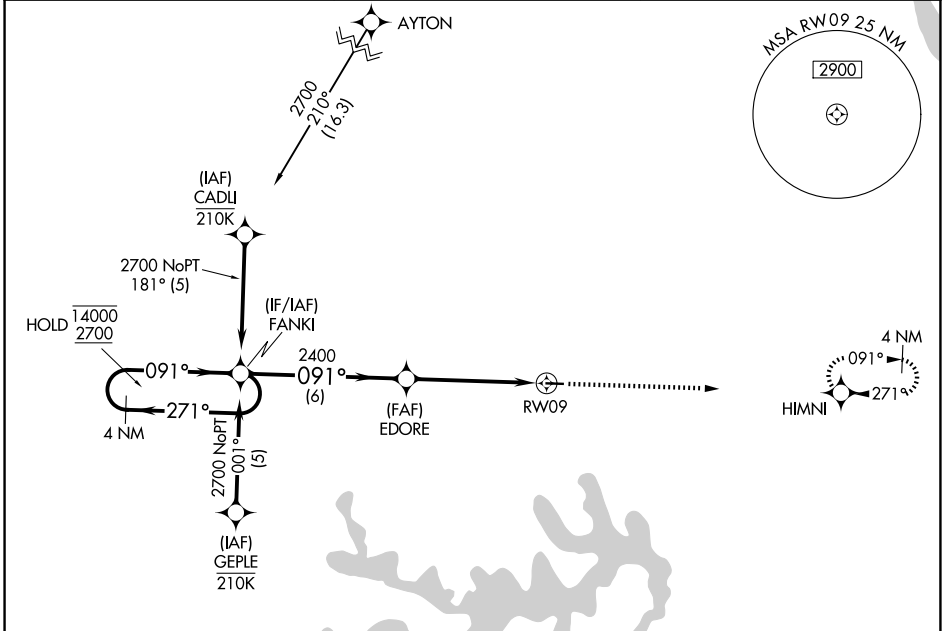
MISSED APPROACH: Climb to 2600 direct HIMNI and hold.

Procedure NA at night. Rwy 9 helicopter visibility reduction below 1 SM NA. Use Quincy, IL altimeter setting.

UIN ASOS  
**121.425**

KANSAS CITY CENTER  
**126.225 317.775**

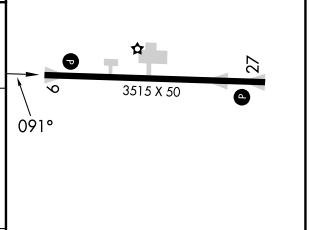
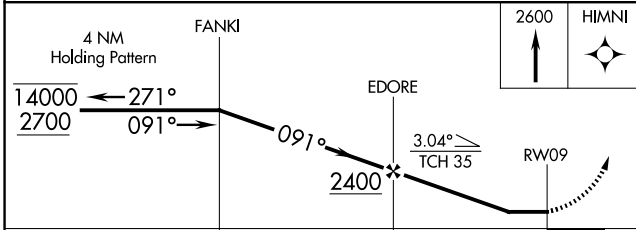
UNICOM  
**122.8 (CTAF)**



NC-3, 11 JUN 2026 to 09 JUL 2026

NC-3, 11 JUN 2026 to 09 JUL 2026

ELEV 737	TDZE 737
----------	----------



CATEGORY	A	B	C	D
LNNAV MDA	1280-1	543 (600-1)	1280-1 $\frac{1}{8}$ 543 (600-1 $\frac{1}{8}$ )	NA
CIRCLING	1380-1	643 (700-1)	1380-1 $\frac{3}{4}$ 643 (700-1 $\frac{3}{4}$ )	NA

MIRL Rwy 9-27