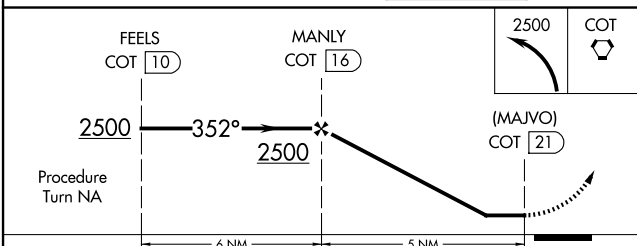
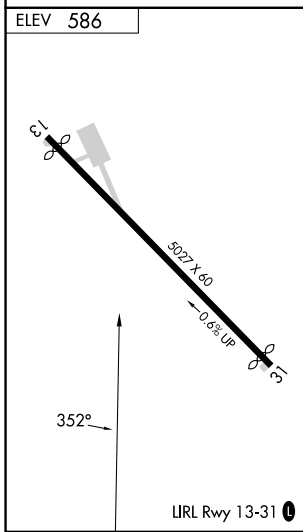
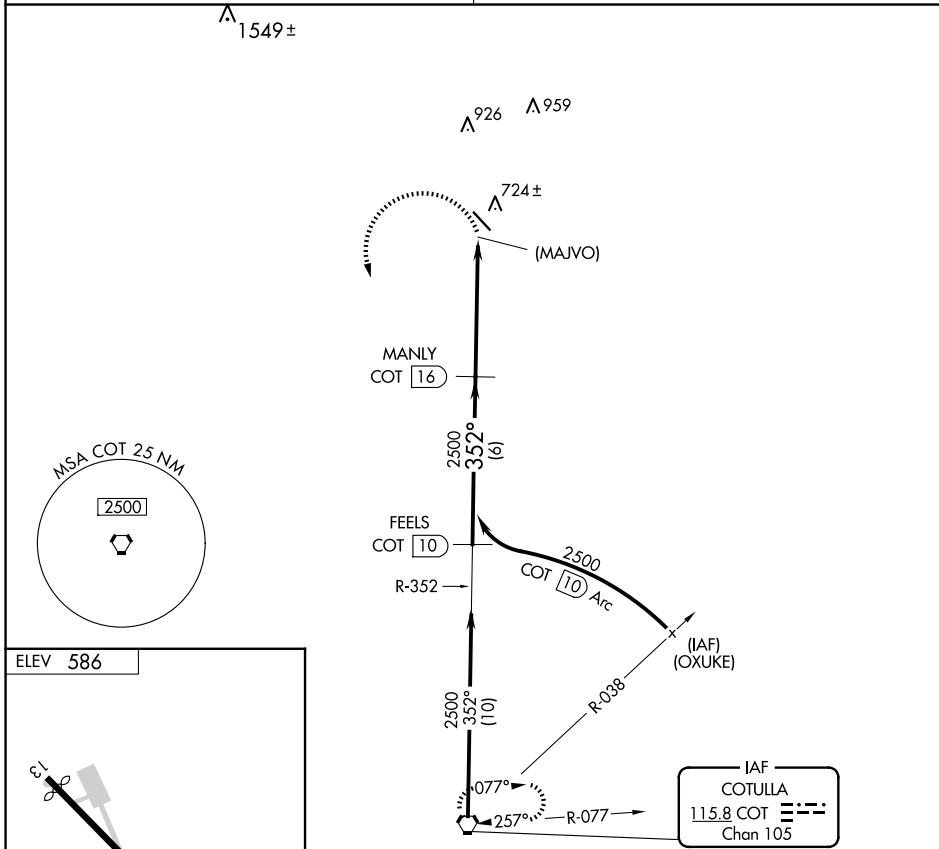


VORTAC COT <b>115.8</b> Chan <b>105</b>	APP CRS <b>352°</b>	Rwy Idg TDZE Apt Elev	<b>N/A</b> <b>N/A</b> <b>586</b>
---	------------------------	-----------------------------	--

# VOR/DME or GPS-A

MC KINLEY FLD (T3Ø)

NA Use Cotulla altimeter setting. Procedure NA at night.	MISSED APPROACH: Climbing left turn to 2500 direct COT VORTAC and hold.
HOUSTON CENTER <b>134.6 322.5</b>	UNICOM <b>122.8 (CTAF) Ø</b>



CATEGORY	A	B	C	D
CIRCLING	1120-1	534 (600-1)	1120-1½ 534 (600-1½)	NA

SC-3, 11 JUN 2026 to 09 JUL 2026

SC-3, 11 JUN 2026 to 09 JUL 2026