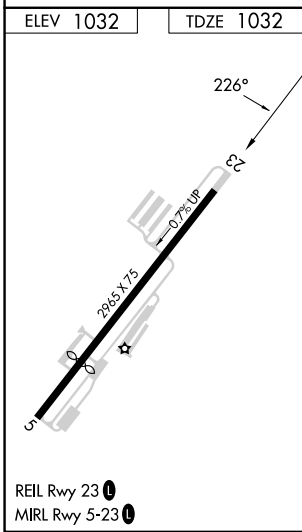
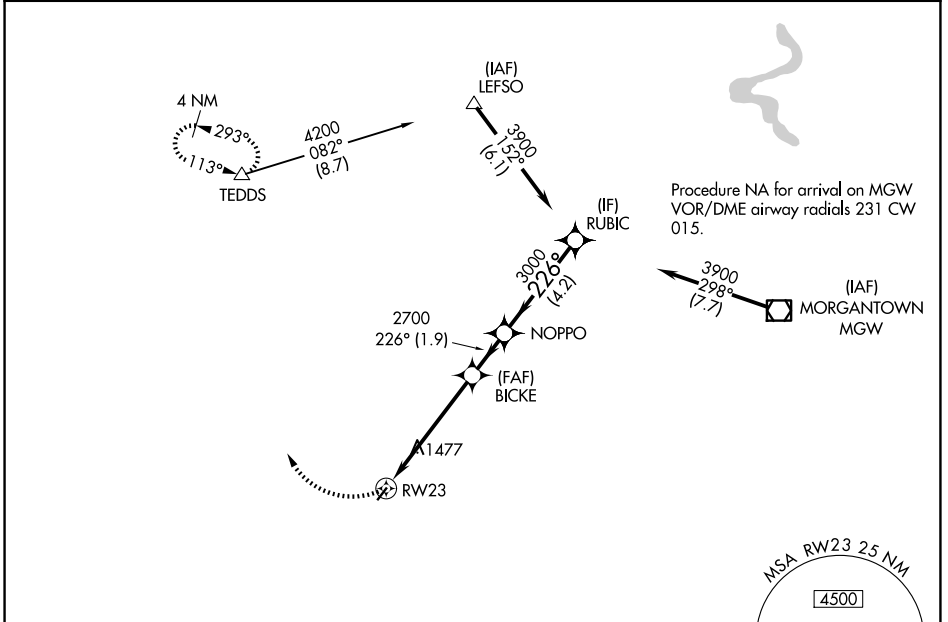


APP CRS 226°	Rwy Ldg TDZE Apt Elev	2965 1032 1032
------------------------	-----------------------------	---

RNAV (GPS) RWY 23

FAIRMONT MUNI-FRANKMAN FLD (4G7)

RNP APCH.		MISSED APPROACH: Climbing right turn to 4000 direct TEDDS and hold.	
<p>Procedure NA at night. Rwy 23 helicopter visibility reduction below 1 SM NA.</p>			
CKB ASOS-3 127,825	CLARKSBURG APP CON* 121.15 284.65	CLNC DEL 118.35	UNICOM 122.8 (CTAF) 1



4000	TEDDS	Visual Segment - Obstacles.			
	△				
		NOPPO		RUBIC	
		BICKE			3900
	RW23	2700	3000		
		5.1 NM	1.9 NM	4.2 NM	
CATEGORY	A	B	C	D	
LNAV MDA	1840-1 808 (900-1)	1840-1¼ 808 (900-1¼)	1840-2½ 808 (900-2½)	NA	
CIRCLING	1840-1 808 (900-1)	1840-1¼ 808 (900-1¼)	2020-3 988 (1000-3)	NA	

NE-4, 11 JUN 2026 to 09 JUL 2026

NE-4, 11 JUN 2026 to 09 JUL 2026