

|  |                        |                             |   |
|--|------------------------|-----------------------------|---|
| WAAS<br>CH <b>87032</b><br><b>W04A</b> | APP CRS<br><b>044°</b> | Rwy Ldg<br>TDZE<br>Apt Elev | <b>4001</b><br><b>821</b><br><b>823</b> |
|--|------------------------|-----------------------------|---|

# RNAV (GPS) RWY 4

CLINTON RGNL (GLY)

RNP APCH.

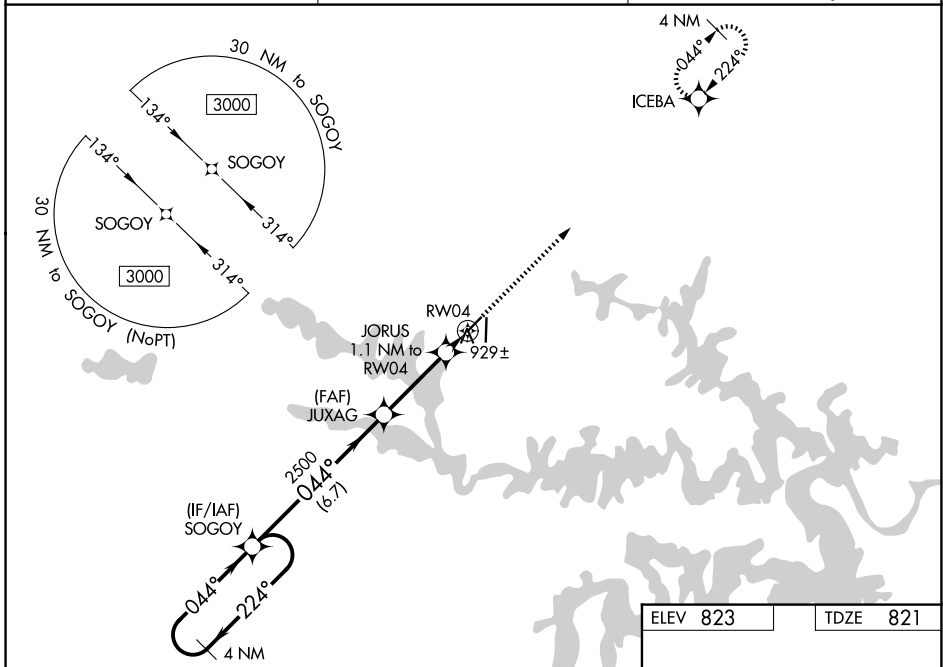
**⚠** For uncompensated Baro-VNAV systems, LNAV/VNAV NA below -16°C or above 54°C.  
**⚠** When local altimeter setting not received, use Whiteman AFB altimeter setting and increase all DA 61 feet and all MDA 80 feet; increase LNAV-VNAV all Cats and LNAV Cat C visibility ¼ mile. Baro-VNAV NA when using Whiteman AFB altimeter setting. Straight-in Rwy 4 NA at night, Circling Rwy 4 NA at night. Rwy 4 helicopter visibility reduction below 1 SM NA.

MISSED APPROACH:  
Climb to 3000 direct  
ICEBA and hold.

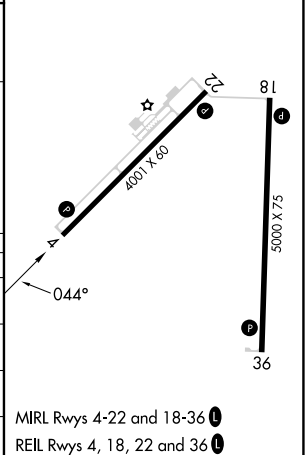
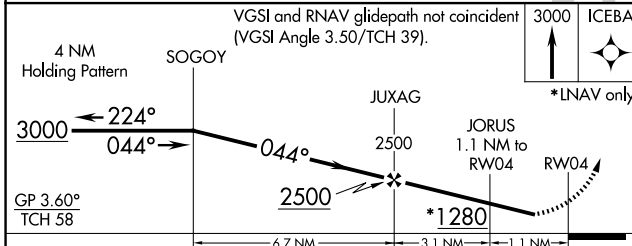
AWOS-3PT  
**120.475**

WHITEMAN APP CON \*  
**127.45**

UNICOM  
**122.8 (CTAF) 0**



|          |          |
|----------|----------|
| ELEV 823 | TDZE 821 |
|----------|----------|



| CATEGORY     | A                     | B                      | C                             | D  |
|--------------|-----------------------|------------------------|-------------------------------|----|
| LPV DA       |                       | 1121-1 300 (300-1)     |                               | NA |
| LNAV/VNAV DA |                       | 1206-1 385 (400-1 1/8) |                               | NA |
| LNAV MDA     |                       | 1180-1 359 (400-1)     |                               | NA |
| CIRCLING     | 1280-1<br>457 (500-1) | 1300-1<br>477 (500-1)  | 1340-1 1/2<br>517 (600-1 1/2) | NA |

NC-3, 11 JUN 2026 to 09 JUL 2026

NC-3, 11 JUN 2026 to 09 JUL 2026