

WAAS CH <b>49128</b> <b>W18A</b>	APP CRS <b>177°</b>	Rwy Idg TDZE Apt Elev	<b>4100</b> <b>1246</b> <b>1250</b>
--	------------------------	-----------------------------	---

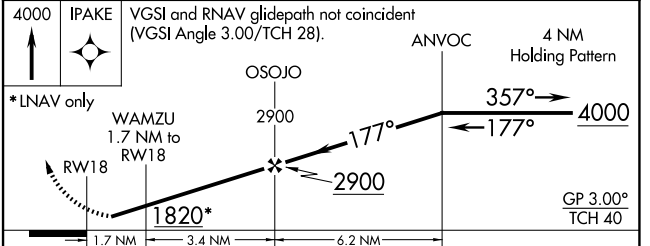
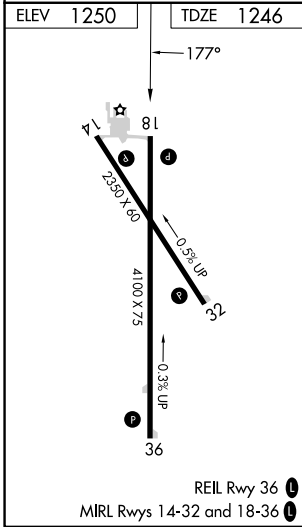
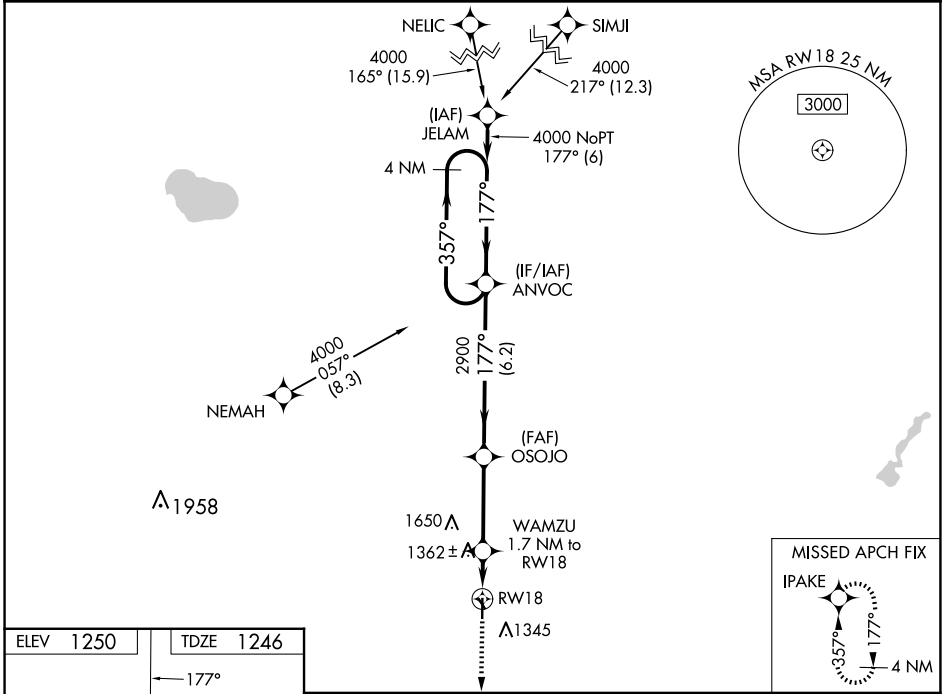
# RNAV (GPS) RWY 18

SAC CITY MUNI (SKI)

**⚠** Night landing: Rwy 14 NA. Baro-VNAV NA. DME/DME RNP-0.3 NA. Helicopter visibility reduction below 3/4 SM NA. Use Carroll altimeter setting; when not received, use Denison altimeter setting and increase all DA 15 feet and all MDA 20 feet. Increase LPV and LNAV/VNAV visibility 1/2 mile all Cats.

**⚠** NA MISSED APPROACH: Climb to 4000 direct IPAKE and hold.

CIN AWOS-3 <b>118.025</b>	MINNEAPOLIS CENTER <b>134.0 288.3</b>	UNICOM <b>122.8 (CTAF) 0</b>
------------------------------	--	---------------------------------



CATEGORY	A	B	C	D
LPV DA	1553-1	307 (400-1)		NA
LNAV/VNAV DA	1553-1	307 (400-1)		NA
LNAV MDA	1680-1	434 (500-1)		NA
CIRCLING	1740-1	490 (500-1)		NA

NC-3, 11 JUN 2026 to 09 JUL 2026

NC-3, 11 JUN 2026 to 09 JUL 2026