

WAAS CH <b>69218</b> <b>W11A</b>	APP CRS <b>110°</b>	Rwy Idg <b>4402</b> TDZE <b>2925</b> Apt Elev <b>2925</b>
----------------------------------------	------------------------	-----------------------------------------------------------------

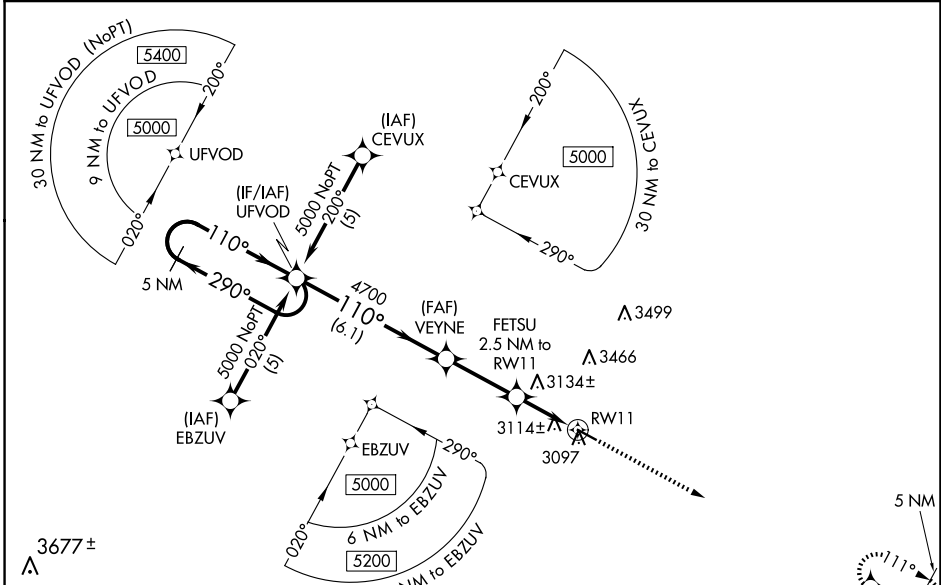
# RNAV (GPS) RWY 11

THOMAS COUNTY (TIF)

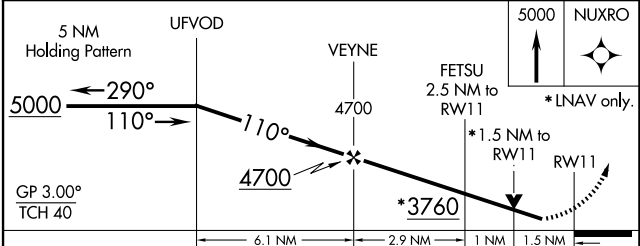
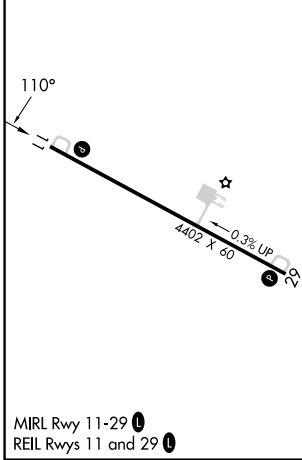
**⚠** Baro-VNAV NA when using North Platte altimeter setting. For uncompensated Baro-VNAV systems, LNAV/VNAV NA below -20°C (-4°F) or above 54°C (130°F). DME/DME RNP-0.3 NA. Visibility reduction by helicopters NA. When local altimeter setting not received use North Platte altimeter setting and increase all DA 137 feet and all MDA 140 feet, increase LPV and LNAV/VNAV Cats A and B visibility ½ mile. VDP NA with North Platte altimeter setting.

MISSED APPROACH: Climb to 5000 direct NUXRO and hold.

AWOS-3 <b>120.825</b>	DENVER CENTER <b>127.95 338.2</b>	CTAF <b>122.9</b>
--------------------------	--------------------------------------	----------------------



ELEV <b>2925</b>	TDZE <b>2925</b>
------------------	------------------



CATEGORY	A	B	C	D
LPV DA	3175-1	250 (300-1)		NA
LNAV/VNAV DA	3490-2	565 (600-2)		NA
LNAV MDA	3440-1	515 (600-1)		NA
CIRCLING	3480-1	555 (600-1)		NA

NC-2, 11 JUN 2026 to 09 JUL 2026

NC-2, 11 JUN 2026 to 09 JUL 2026