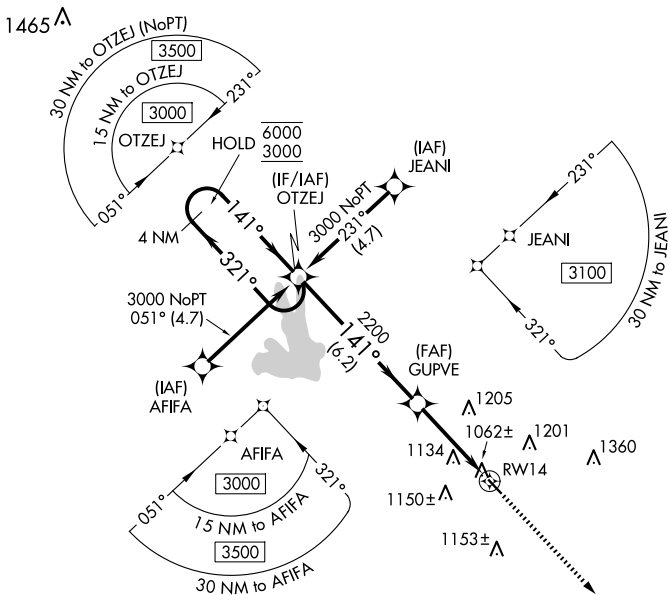


WAAS CH 70429 W14A	APP CRS 141°	Rwy Idg TDZE Apt Elev	3201 958 958
--	------------------------	-----------------------------	---

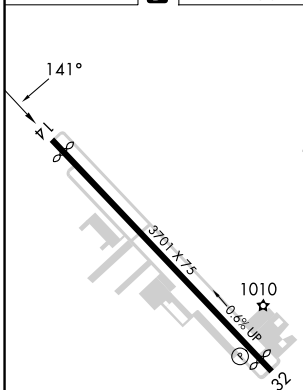
RNAV (GPS) RWY 14

GRIFFIN-SPALDING COUNTY (6A2)

RNP APCH - GPS.		MISSED APPROACH: Climb to 3000 direct LUFEV and hold.	
<p>Procedure NA at night. Rwy 14 helicopter visibility reduction below 1 SM NA.</p>			
AWOS-3 119.750	ATLANTA APP CON 128.575 343.675	CLNC DEL 128.575 343.675	UNICOM 123.075 (CTAF) 0



ELEV 958	D	TDZE 958
----------	----------	----------



REIL Rwy 14 and 32
MIRL Rwy 14-32

4 NM Holding Pattern		OTZEJ	Visual Segment - Obstacles.	3000	LUFEV
6000 ← 321°		← 141° →	141°	GUPVE	
3000				2200	RW14
			6.2 NM	3.8 NM	
CATEGORY	A	B	C	D	
LP MDA	1320-1	362 (400-1)		NA	
LNAV MDA	1440-1	482 (500-1)		NA	

SE-4, 11 JUN 2026 to 09 JUL 2026

SE-4, 11 JUN 2026 to 09 JUL 2026