

APP CRS	Rwy Idg	2999
081°	TDZE	9
	Apt Elev	9

RNAV (GPS) RWY 8

THIBODAUX MUNI (L83)

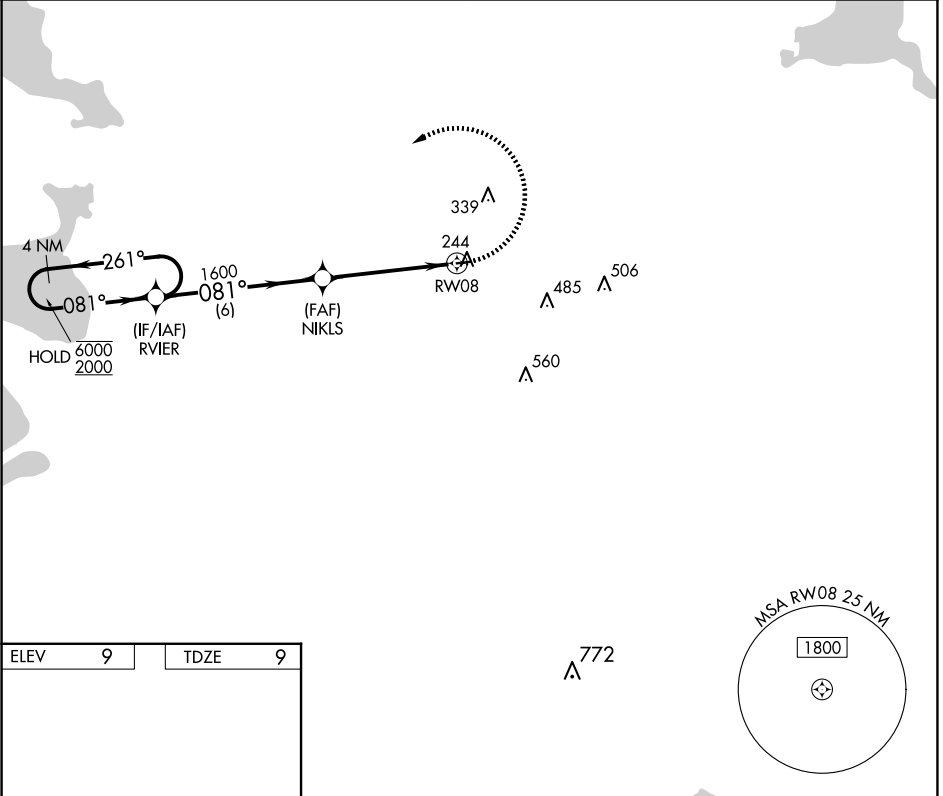
RNP APCH - GPS

NA Rwy 8 helicopter visibility reduction below 1 SM NA. Procedure NA at night. Obtain local altimeter setting on CTAF; when not received, use MSY altimeter setting and increase all MDAs 80 feet.

MISSED APPROACH: Climbing left turn 2000 direct RVIER and hold.

NEW ORLEANS APP CON
118.9 256.9

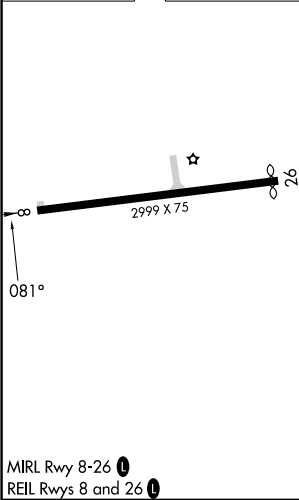
UNICOM
122.8 (CTAF)



SC-4, 11 JUN 2026 to 09 JUL 2026

SC-4, 11 JUN 2026 to 09 JUL 2026

ELEV	9	TDZE	9
------	----------	------	----------



	4 NM Holding Pattern		RVIER	2000	RVIER
	6000	← 261°	→ 081°		
	2000				
			081°		
			1600		
			3.00°		
			TCH 55		
			6 NM	4.8 NM	
CATEGORY	A	B	C	D	
LNAV MDA	460-1	451 (500-1)	NA		
CIRCLING	660-1	651 (700-1)	NA		

MIRL Rwy 8-26 **1**
REIL Rwy 8 and 26 **1**