

APP CRS	Rwy Ldg	4400
009°	TDZE	777
	Apt Elev	779

RNAV (GPS) RWY 1

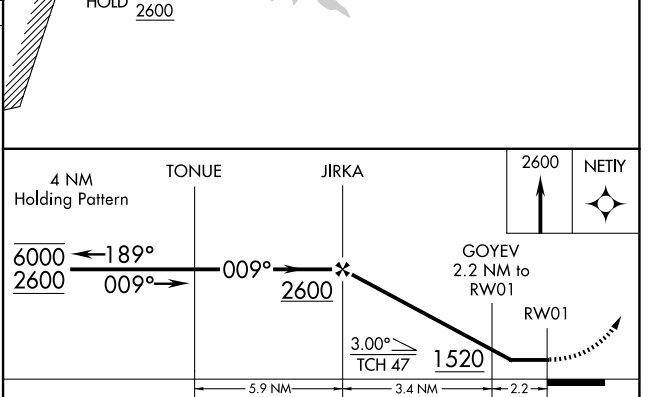
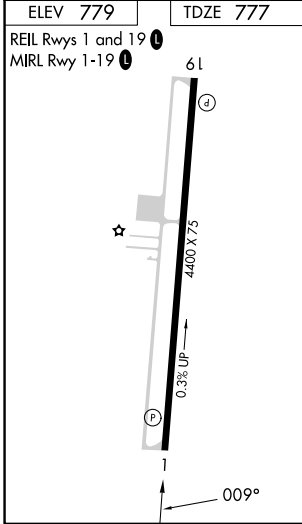
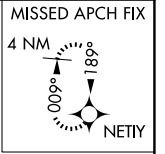
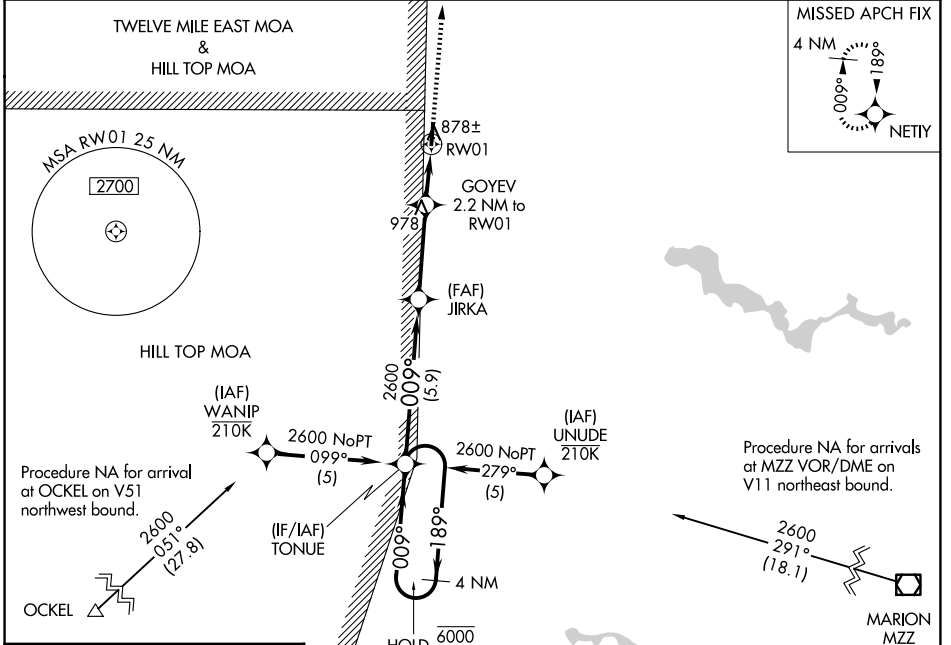
PERU MUNI (I76)

RNP APCH - GPS.

NA Rwy 1 helicopter visibility reduction below 1 SM NA. Use Grissom ARB altimeter setting, when not received, use Logansport/Cass County altimeter setting: increase all MDAs 20 feet and Circling visibility Cat C and D ¼ SM.

MISSED APPROACH:
Climb to 2600 direct NETTY and hold.

KGUS ATIS 132.55 270.8	GRISSOM APP CON * 121.05 338.275	UNICOM 122.8 (CTAF) 0
----------------------------------	--	---------------------------------



CATEGORY	A	B	C	D
LNAV MDA	1160-1	383 (400-1)	1160-1½	383 (400-1½)
CIRCLING	1280-1	501 (600-1)	1500-2 721 (800-2)	1500-2¼ 721 (800-2¼)

EC-2, 11 JUN 2026 to 09 JUL 2026

EC-2, 11 JUN 2026 to 09 JUL 2026