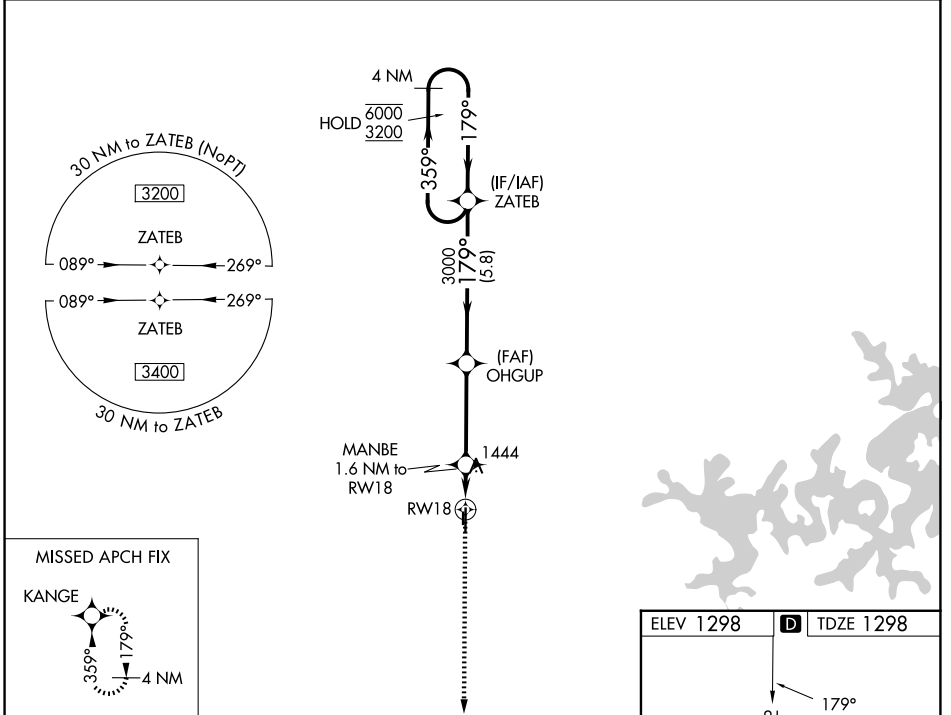


WAAS CH 77830 W18A	APP CRS 179°	Rwy Ldg TDZE Apt Elev	4196 1298 1298
--	------------------------	-----------------------------	---

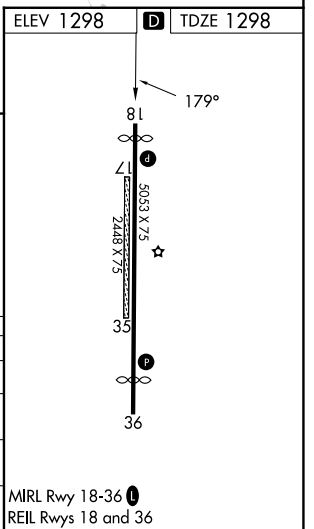
RNAV (GPS) RWY 18

BENTONVILLE MUNI/LOUISE M THADEN FLD (VBT)

RNP APCH.		MISSED APPROACH: Climb to 3400 direct KANGE and hold.	
<p>⚠ Circling NA to Rwy 17 and 35. Rwy 18 helicopter visibility reduction below 3/4 SM NA. For uncompensated Baro-VNAV systems, LNAV/VNAV NA below -17°C or above 54°C.</p>			
AWOS-3PT 134.975	RAZORBACK APP CON ★ 121.0 (WEST) 244.575	CLNC DEL 121.05 263.125	UNICOM 122.975 (CTAF) L



3400	KANGE				
*LNAV only.	MANBE 1.6 NM to RWY 18	OHGUP 3000	ZATEB	4 NM Holding Pattern	
	1900*	3000	359° → 6000	← 179°	3200
	1.6 NM	3.6 NM	5.8 NM	GP 3.00° TCH 45	
CATEGORY	A	B	C	D	
LPV DA	1548-1		250 (300-1)		
LNAV/VNAV DA	1688-1 1/8		390 (400-1 1/8)		
LNAV MDA	1700-1	402 (500-1)	1700-1 1/8	402 (500-1 1/8)	
CIRCLING	1780-1	482 (500-1)	1920-1 3/4	1940-2	MIRL Rwy 18-36 L REL Rwys 18 and 36
			622 (700-1 3/4)	642 (700-2)	



SC-1, 11 JUN 2026 to 09 JUL 2026

SC-1, 11 JUN 2026 to 09 JUL 2026