

| | | | |
|--|------------------------|-----------------------------|---|
| WAAS CH 70713 W05A | APP CRS 050° | Rwy Ldg TDZE Apt Elev | 5002 757 757 |
|--|------------------------|-----------------------------|---|

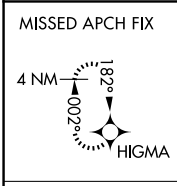
RNAV (GPS) RWY 5

NORTH VERNON (0VO)

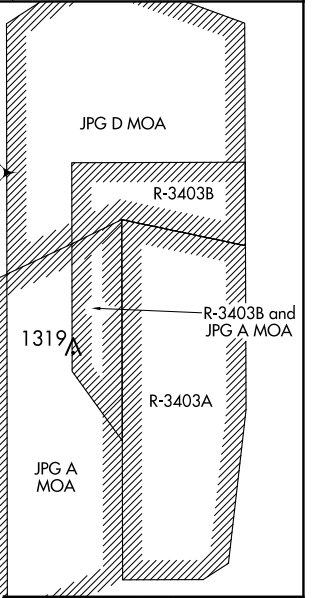
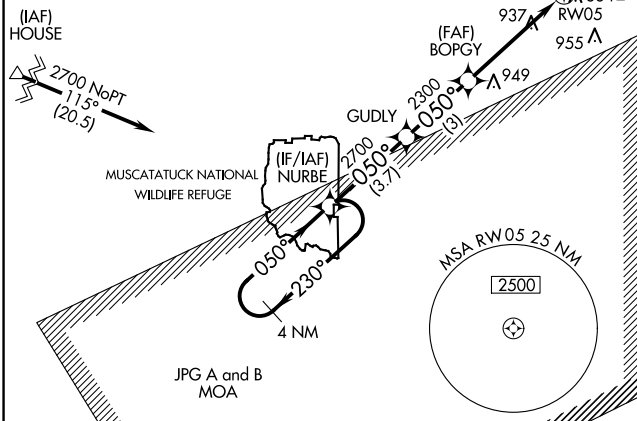
NA For uncompensated Baro-VNAV systems, LNAV/VNAV NA below -16°C (4°F) or above 54°C (130°F). DME/DME RNP-0.3 NA. When local altimeter setting not received, use Shelbyville altimeter setting and increase LPV DA to 1175, LNAV/VNAV DA to 1200, and all MDAs 100 feet. Increase LPV all Cats visibility 1/8 SM, LNAV/VNAV and LNAV and Circling Cat C visibility 1/4 SM. VDP and Baro-VNAV NA when using Shelbyville altimeter setting. Helicopter visibility reduction below 3/4 SM NA.

MISSED APPROACH:
Climb to 2800 direct KONVY and on track 353° to HIGMA and hold.

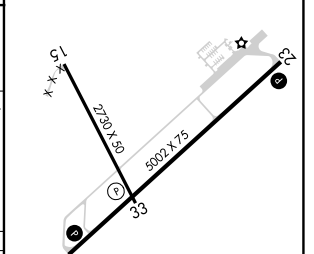
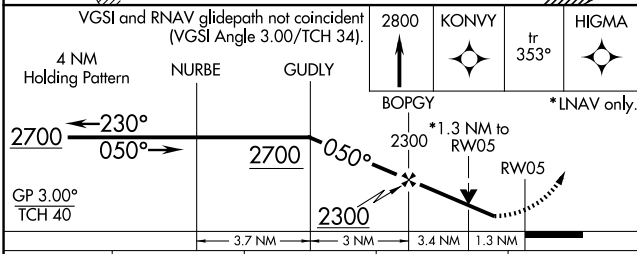
| | | |
|--------------------------|---|-------------------------------|
| AWOS-3 120.625 | INDIANAPOLIS APP CON 134.85 317.8 | UNICOM 122.7 (CTAF) |
|--------------------------|---|-------------------------------|



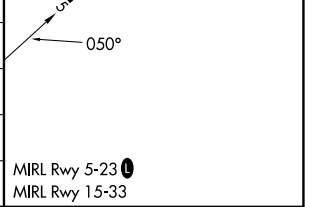
Procedure NA for arrivals at HOUSE via V53 northwest bound.



| | |
|----------|----------|
| ELEV 757 | TDZE 757 |
|----------|----------|



| CATEGORY | A | B | C | D |
|--------------|-----------------------|-----------------------|-------------------------|----|
| LPV DA | 1091-1¼ | 334 (400-1¼) | | NA |
| LNAV/VNAV DA | 1116-1¼ | 359 (400-1¼) | | NA |
| LNAV MDA | 1200-1 | 443 (500-1) | 1200-1⅜ 443 (500-1⅜) | NA |
| CIRCLING | 1200-1 443 (500-1) | 1300-1 543 (600-1) | 1300-1½ 543 (600-1½) | NA |



EC-2, 11 JUN 2026 to 09 JUL 2026

EC-2, 11 JUN 2026 to 09 JUL 2026