

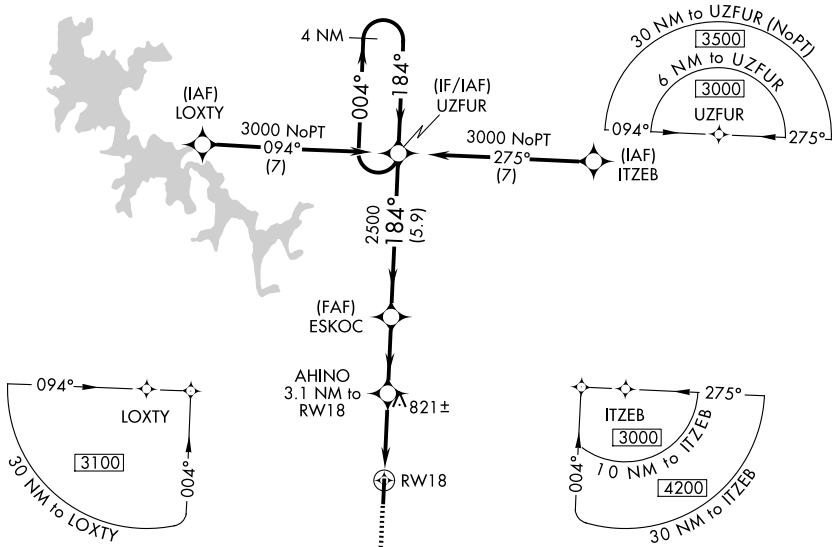
WAAS CH 48812 W18A	APP CRS 184°	Rwy Ldg TDZE Apt Elev	4750 609 614
--	------------------------	-----------------------------	---

RNAV (GPS) RWY 18

MURFREESBORO MUNI (MBT)

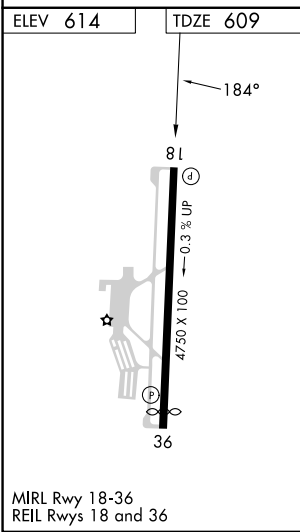
▼ For uncompensated Baro-VNAV systems, LNAV/VNAV NA below -16°C (4°F) or above 54°C (130°F). DME/DME RNP-0.3 NA. MISSED APPROACH: Climb to 3000 direct URACE and hold.

AWOS-3 133.975	NASHVILLE APP CON 118.4 360.7	GCO 135.075	UNICOM 123.075 (CTAF)
--------------------------	---	-----------------------	---------------------------------



SE-1, 11 JUN 2026 to 09 JUL 2026

SE-1, 11 JUN 2026 to 09 JUL 2026



3000 URACE		VGSI and descent angles not coincident (VGSI Angle 3.00/TCH 20).		4 NM Holding Pattern	
AHINO 3.1 NM to RW18		ESKOC 2500		UZFUR 3000	
*1.4 NM to RW18		*LNAV only.		GP 3.00° TCH 40	
RW18		*1620		2500	
1.4		1.7 NM		2.7 NM	
		B		C	
CATEGORY	A	B	C	D	
LPV DA		859-3/4	250 (300-3/4)		NA
LNAV/VNAV DA		898-7/8	289 (300-7/8)		NA
LNAV MDA	1080-1	471 (500-1)	1080-1 3/8 471 (500-1 3/8)		NA
CIRCLING	1080-1	466 (500-1)	1280-1 3/4 666 (700-1 3/4)		NA