

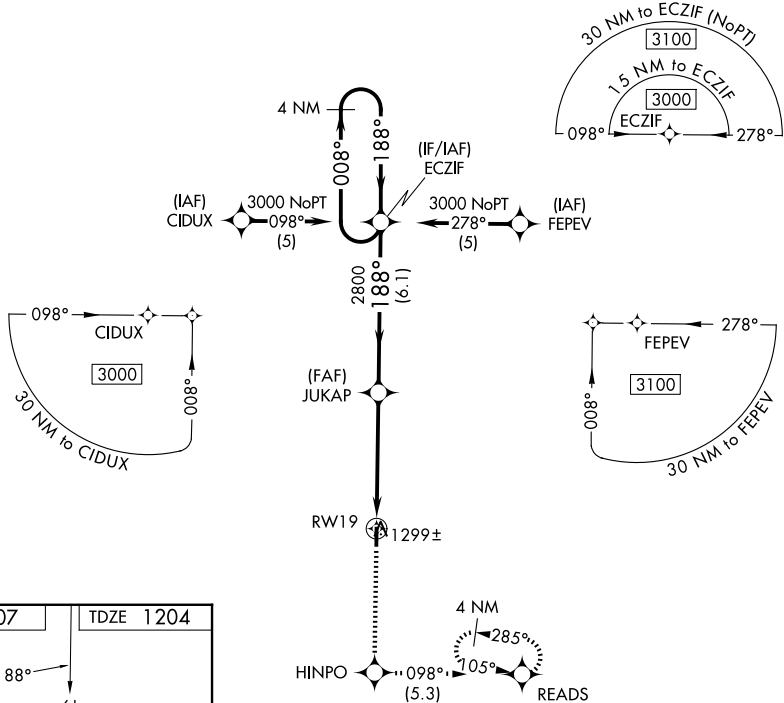
APP CRS	Rwy Ldg	3501
188°	TDZE	1204
	Apt Elev	1207

RNAV (GPS) RWY 19

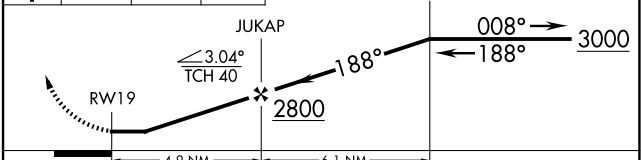
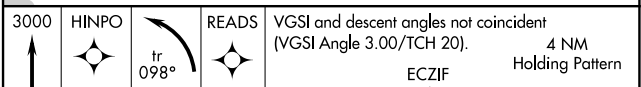
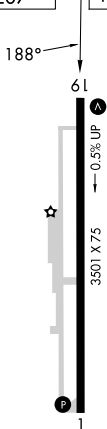
ASHLAND COUNTY (3G4)

RNP APCH.	MISSED APPROACH: Climb to 3000 direct HINPO and left turn on track 098° to READS and hold.
▼ Rwy 19 helicopter visibility reduction below 1 SM NA. ▲ NA Procedure NA at night. Use Mansfield altimeter setting, when not received use Wooster altimeter setting.	

MFD ASOS 125.3	CLEVELAND APP CON ★ 128.35 360.65	UNICOM 122.7 (CTAF)
--------------------------	---	-------------------------------



ELEV 1207	TDZE 1204
-----------	-----------



CATEGORY	A	B	C	D
LNAV MDA	1600-1	396 (400-1)	1600-1 $\frac{1}{8}$ 396 (400-1 $\frac{1}{8}$)	NA
CIRCLING	1660-1	453 (500-1)	1740-1 $\frac{1}{2}$ 533 (600-1 $\frac{1}{2}$)	NA

EC-2, 11 JUN 2026 to 09 JUL 2026

EC-2, 11 JUN 2026 to 09 JUL 2026