

WAAS CH 81831 W15A	APP CRS 157°	Rwy Ldg TDZE Apt Elev	3808 1230 1230
--	------------------------	-----------------------------	---

RNAV (GPS) RWY 15

LAGO VISTA TX/RUSTY ALLEN (RYW)

RNP APCH - GPS.

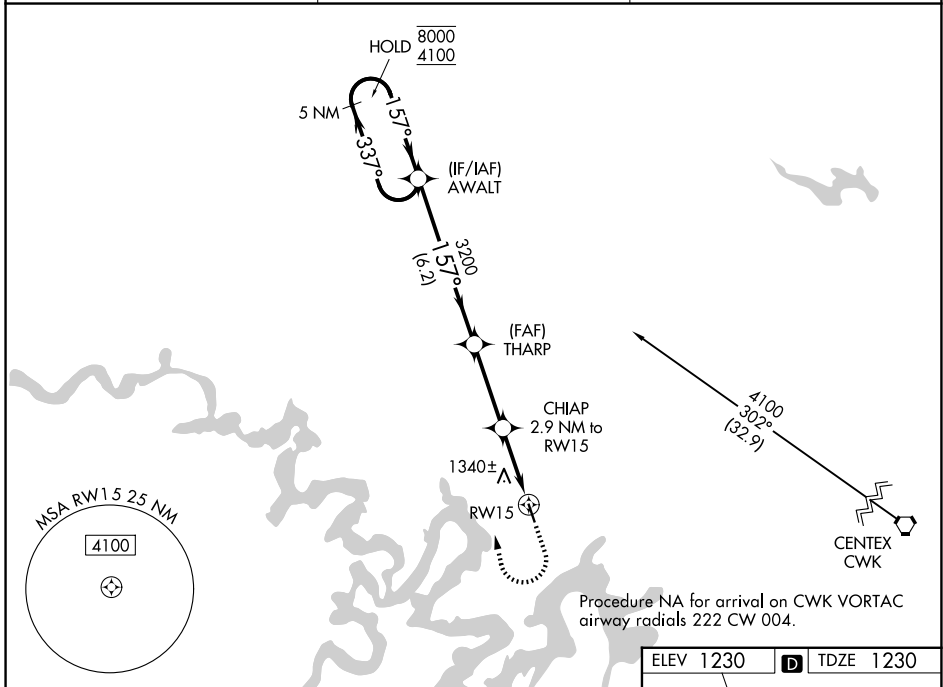
▼ For uncompensated Baro-VNAV systems, LNAV/VNAV NA below -17°C or above 54°C. Rwy 15 helicopter visibility reduction below $\frac{3}{4}$ SM NA.

MISSED APPROACH: Climb to 1700 then climbing right turn to 4100 direct AWALT and hold, continue climb-in-hold to 4100.

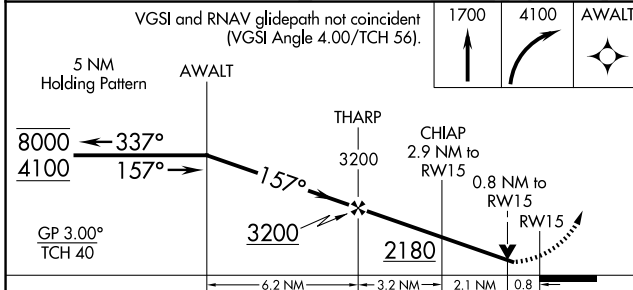
AWOS-3PT
119.375

AUSTIN APP CON
119.0 370.85

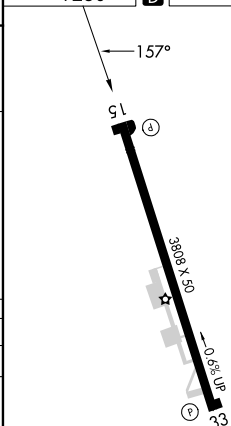
UNICOM
122.725 (CTAF) **0**



ELEV 1230 **D** TDZE 1230



CATEGORY	A	B	C	D
LPV DA	1480-1	250 (300-1)		NA
LNAV/VNAV DA	1641-1 $\frac{1}{8}$	411 (500-1 $\frac{1}{8}$)		NA
LNAV MDA	1620-1	390 (400-1)		NA
CIRCLING	1660-1 430 (500-1)	1860-1 630 (700-1)		NA



MIRL Rwy 15-33 **0**