

APP CRS	Rwy Ldg	3800
180°	TDZE	437
	Apt Elev	437

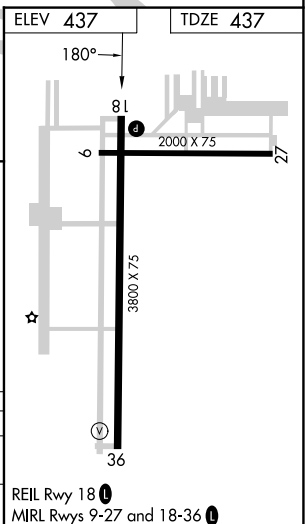
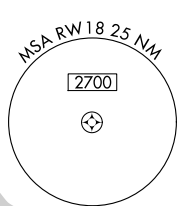
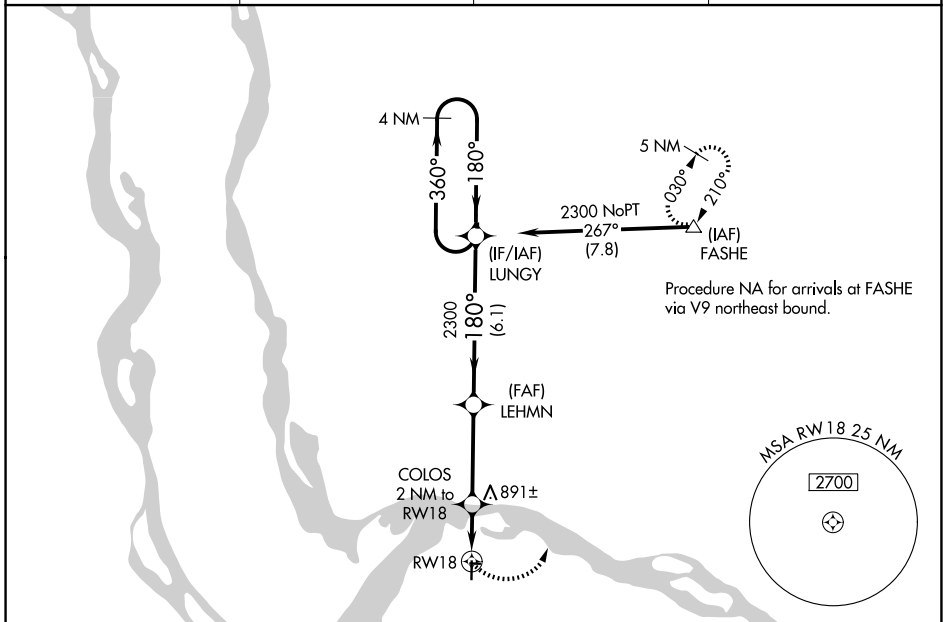
RNAV (GPS) RWY 18

ST CHARLES COUNTY RGNL/SMARTT FLD (S/E/T)

⚠ DME/DME RNP-0.3 NA. When local altimeter setting not received, use St Louis Lambert Intl altimeter setting and increase all MDAs 60 feet; increase visibility Cat C ¼ SM. VDP NA with St Louis Lambert Intl altimeter setting.

⚠ MISSED APPROACH: Climbing left turn to 2700 direct FASHE and hold.

ASOS 118.075	ST. LOUIS APP CON 124.2 353.9	CLNC DEL 121.6	UNICOM 122.7 (CTAF) 📻
------------------------	-----------------------------------------	--------------------------	----------------------------------------



2700 FASHE **⚠**

VGSI and descent angles not coincident (VGSI Angle 3.00/TCH 40).

	COLOS 2 NM to RWY 18	LEHMN	LUNGY	4 NM Holding Pattern
	1.1 NM to RWY 18			
	1.1 NM	0.9 NM	3.6 NM	6.1 NM
	1260	2300	2300	2300
	≤ 3.69° TCH 43	180°	360°	180°

CATEGORY	A	B	C	D
RNAV MDA	840-1	403 (500-1)	840-1¼ 403 (500-1¼)	NA
CIRCLING	840-1 403 (500-1)	900-1 463 (500-1)	1220-2¼ 783 (800-2¼)	NA

NC-3, 11 JUN 2026 to 09 JUL 2026

NC-3, 11 JUN 2026 to 09 JUL 2026