

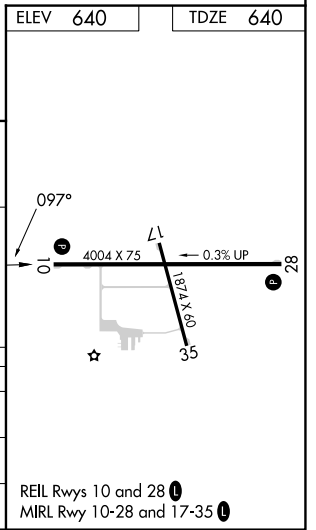
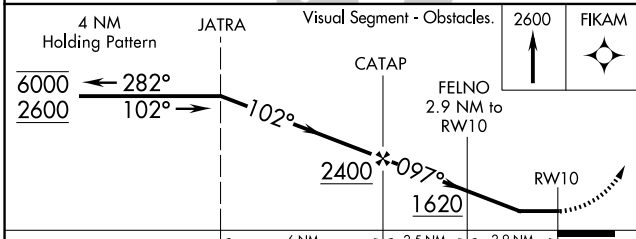
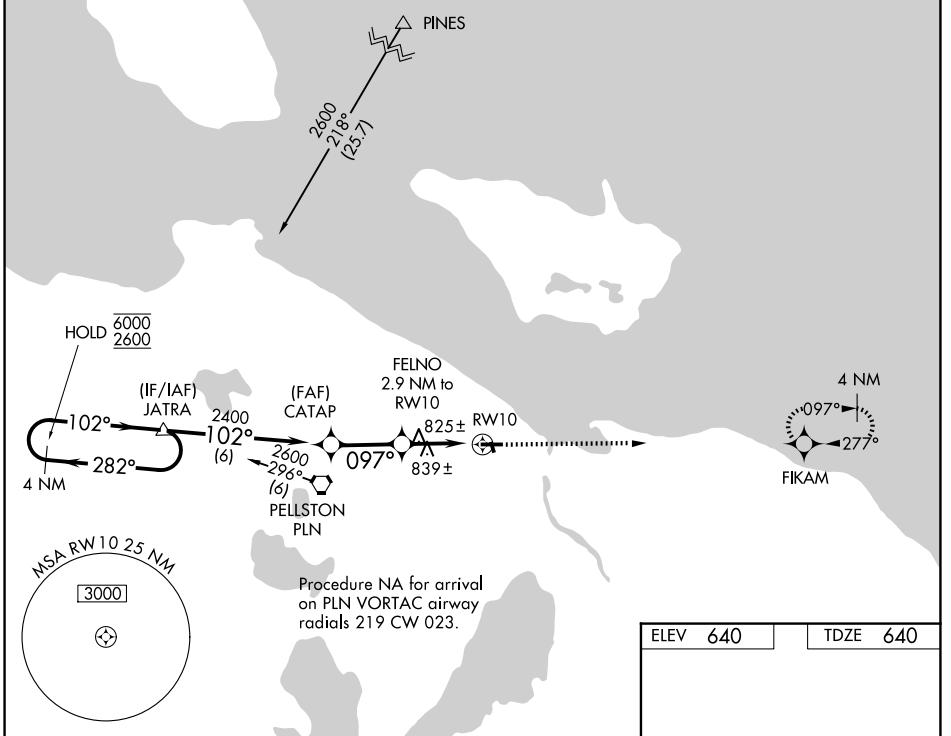
WAAS CH <b>50224</b> <b>W10A</b>	APP CRS <b>097°</b>	Rwy Ldg TDZE Apt Elev <b>640</b>	<b>4004</b> <b>640</b> <b>640</b>
--	------------------------	-------------------------------------	---

# RNAV (GPS) RWY 10

CHEBOYGAN COUNTY (SLH)

RNP APCH - GPS.	<p>MISSED APPROACH: Climb to 2600 direct FIKAM and hold.</p>
<p>▼ Rwy 10 helicopter visibility reduction below 1 SM NA. ▲ Procedure NA at night.</p>	

AWOS-3P <b>118.175</b>	MINNEAPOLIS CENTER <b>134.6 354.05</b>	UNICOM <b>122.8 (CTAF) 0</b>
---------------------------	---	---------------------------------



CATEGORY	A	B	C	D
LP MDA	1080-1	440 (500-1)	1080-1¼ 440 (500-1¼)	NA
LNAV MDA	1100-1	460 (500-1)	1100-1⅜ 460 (500-1⅜)	NA
CIRCLING	1140-1	500 (500-1)	1140-1½ 500 (500-1½)	NA

EC-1, 11 JUN 2026 to 09 JUL 2026

EC-1, 11 JUN 2026 to 09 JUL 2026