

WAAS CH <b>58338</b> <b>W18A</b>	APP CRS <b>181°</b>	Rwy Ldg <b>3202</b> TDZE <b>548</b> Apt Elev <b>551</b>
--	------------------------	---

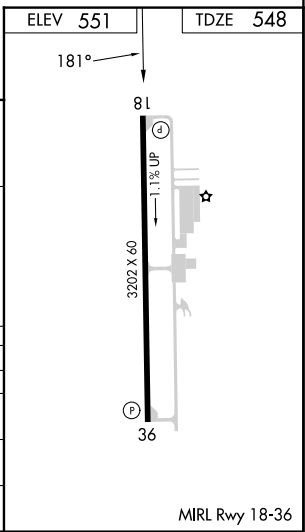
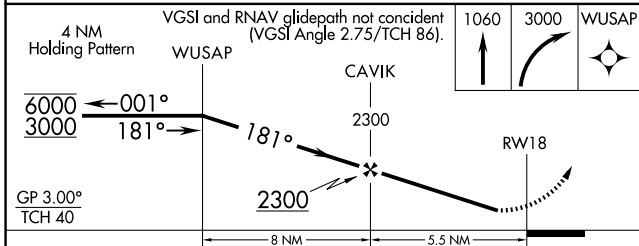
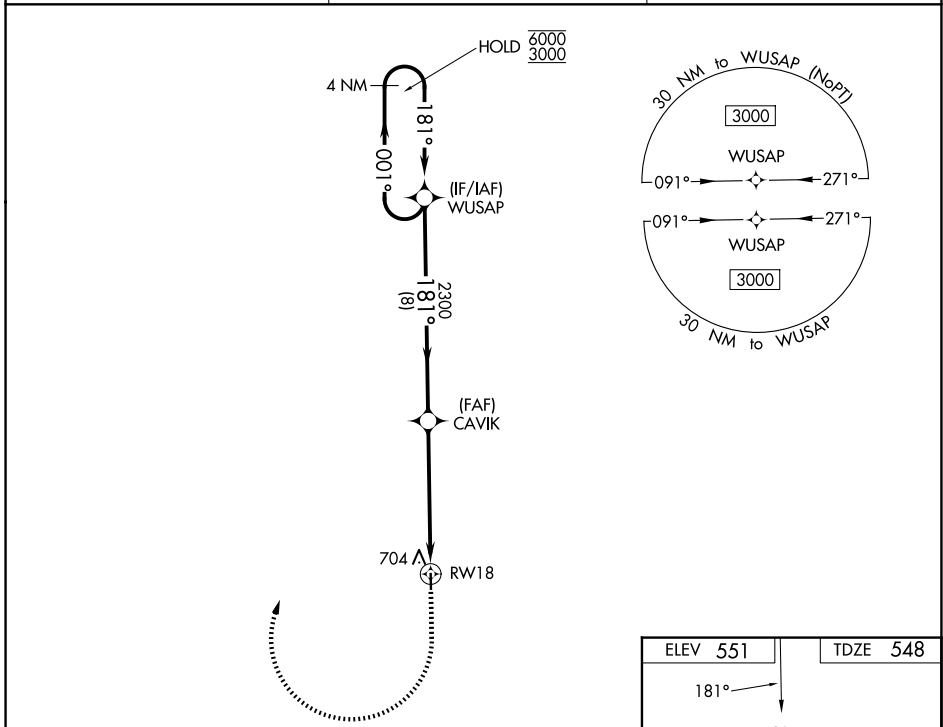
# RNAV (GPS) RWY 18

HOLLY SPRINGS-MARSHALL COUNTY (M41)

RNP APCH-GPS. MISSED APPROACH: Climb to 1060 then climbing right turn to 3000 direct WUSAP and hold.

▼ Rwy 18 helicopter visibility reduction below 3/4 SM NA. Baro-VNAV NA. Use Olive Branch altimeter setting; when not received, use Oxford altimeter setting and increase LPV DA to 870, and all visibilities 1/8 SM; increase LNAV/VNAV DA to 957 and all MDA's 20 feet.

OLV AWOS-3 <b>119.925</b>	MEMPHIS APP CON <b>125.8 338.3</b>	UNICOM <b>122.8</b> (CTAF)
------------------------------	---------------------------------------	-------------------------------



CATEGORY	A	B	C	D
LPV DA	858-1 1/8	310 (400-1 1/8)		NA
LNAV/VNAV DA	945-1 1/2	397 (400-1 1/2)		NA
LNAV MDA	1020-1	472 (500-1)	1020-1 3/8 472 (500-1 3/8)	NA
CIRCLING	1080-1 529 (600-1)	1100-1 549 (600-1)	1260-2 709 (800-2)	NA

SC-4, 11 JUN 2026 to 09 JUL 2026

SC-4, 11 JUN 2026 to 09 JUL 2026