

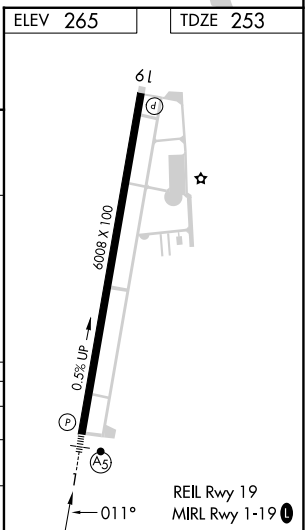
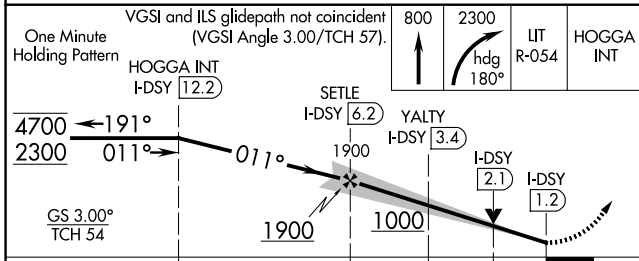
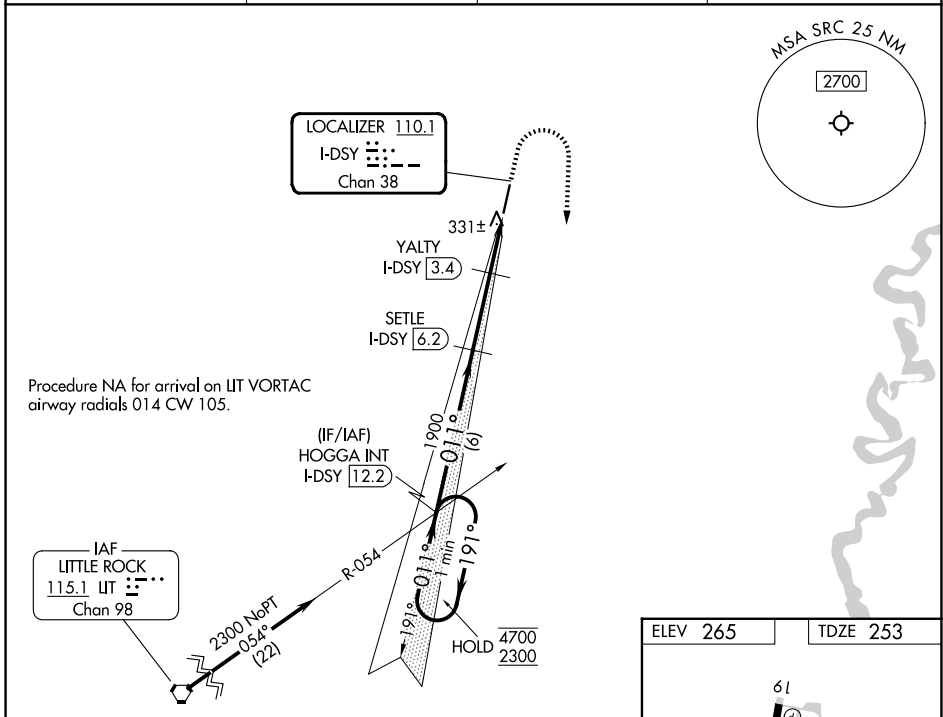
LOC/DME I-DSY 110.1 Chan 38	APP CRS 011°	Rwy Ldg TDZE Apt Elev	6008 253 265
---	------------------------	-----------------------------	---

ILS or LOC RWY 1

SEARCY RGNL (SRC)

DME required.		MALSR	MISSED APPROACH: Climb to 800 then climbing right turn to 2300 on heading 180° and on LIT VORTAC R-054 to HOGGA INT/I-DSY 12.2 DME and hold.
Circling NA for Cats B and C west of Rwy 1-19. For inop ALS, increase S-LOC 1 Cat C visibility to 1 SM.			

AWOS-3PT 128.325	LITTLE ROCK APP CON 119.75 291.775	CLNC DEL 119.75	UNICOM 122.7 (CTAF) 0
----------------------------	--	---------------------------	---------------------------------



CATEGORY	A	B	C	D
S-ILS 1	453-1/2		200 (200-1/2)	NA
S-LOC 1	600-1/2	347 (400-1/2)	600-5/8 347 (400-5/8)	NA
CIRCLING	760-1	495 (500-1)	780-1/2 515 (600-1/2)	NA

SC-1, 11 JUN 2026 to 09 JUL 2026

SC-1, 11 JUN 2026 to 09 JUL 2026