

WAAS CH <b>58342</b> <b>W06A</b>	APP CRS <b>058°</b>	Rwy Ldg TDZE Apt Elev	<b>4602</b> <b>3548</b> <b>3548</b>
--	------------------------	-----------------------------	---

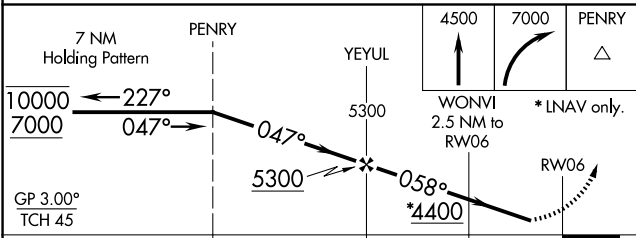
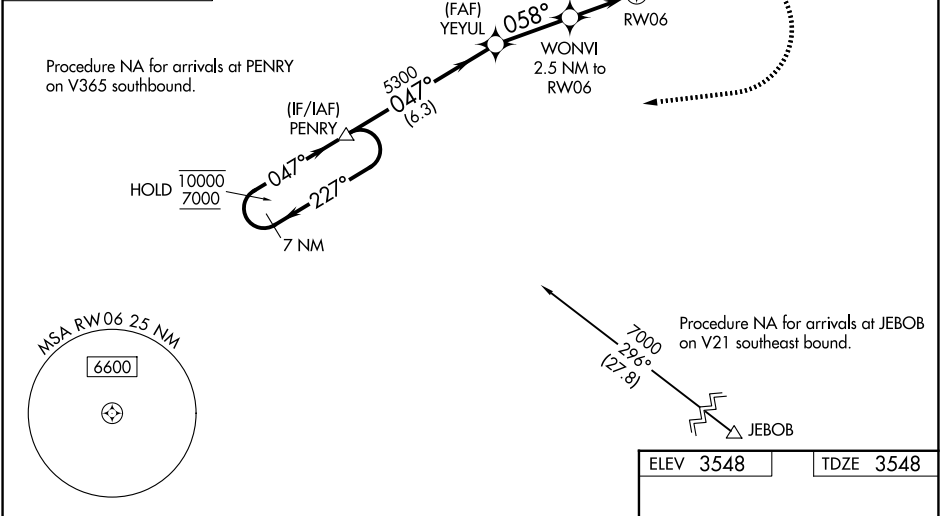
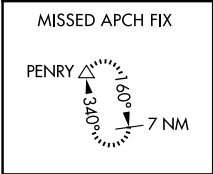
# RNAV (GPS) RWY 6

CONRAD (S01)

RNP APCH. MISSED APPROACH: Climb to 4500, then climbing right turn to 7000 direct PENRY and hold, continue climb in hold to 7000.

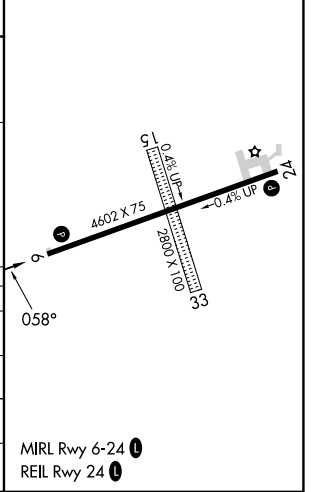
⚠ NA Circling NA to Rwys 15 and 33. Rwy 6 helicopter visibility reduction below 3/4 SM NA. Baro-VNAV NA. For uncompensated Baro-VNAV systems, LNAV/VNAV NA below -22°C or above 53°C. Use Cut Bank altimeter setting.

CTB ASOS <b>119.025</b>	SALT LAKE CITY CENTER <b>133.4 285.4</b>	AUNICOM <b>122.8 (CTAF) 0</b>
----------------------------	---	----------------------------------



ELEV 3548	TDZE 3548
-----------	-----------

CATEGORY	A	B	C	D
LPV DA		3915-1	367 (400-1)	
LNAV/VNAV DA		4266-2	718 (800-2)	
LNAV MDA	4220-1	672 (700-1)	4220-1 7/8	672 (700-1 1/8)
CIRCLING	4220-1 672 (700-1)	4340-1 792 (800-1)	4460-2 3/4 912 (1000-2 3/4)	4620-3 1072 (1100-3)



NW-1, 11 JUN 2026 to 09 JUL 2026

NW-1, 11 JUN 2026 to 09 JUL 2026