

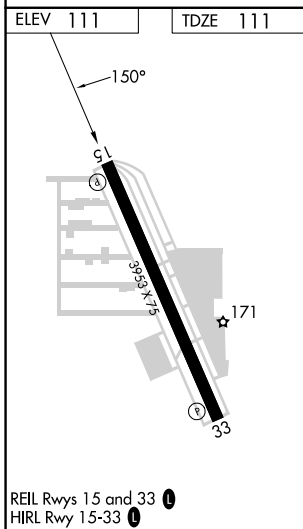
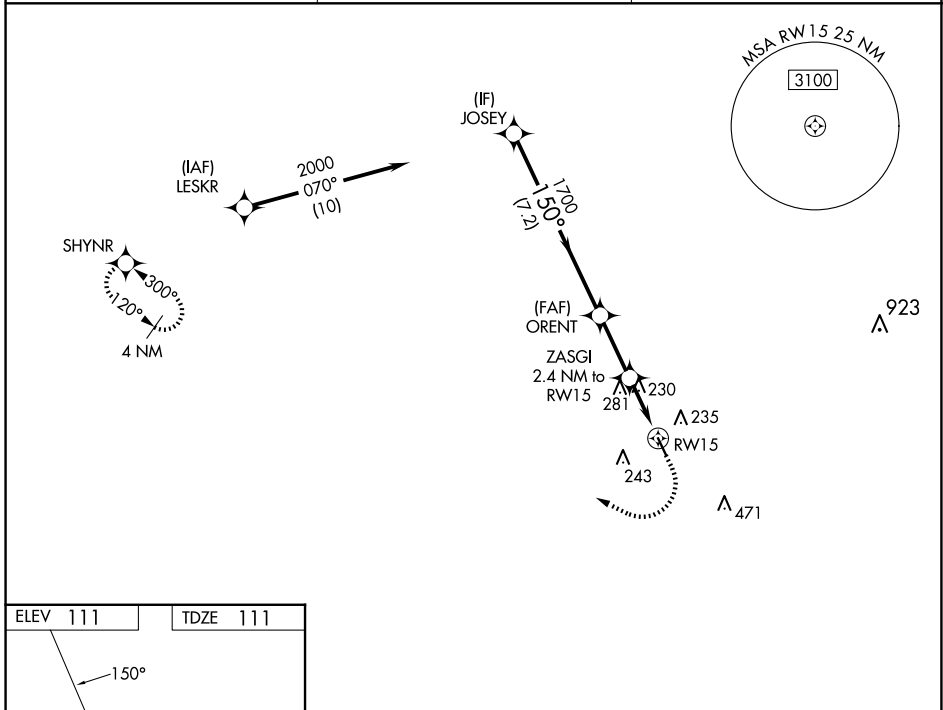
WAAS CH 40429 W15A	APP CRS 150°	Rwy Idg TDZE Apt Elev	3953 111 111
--	------------------------	-----------------------------	---

RNAV (GPS) RWY 15

WEST HOUSTON (IWS)

RNP APCH.	MISSED APPROACH: Climb to 600 then climbing right turn to 2000 direct SHYNR and hold.
Procedure NA at night. Rwy 15 helicopter visibility reduction below 1 SM NA. Use George Bush Intcntl/Houston altimeter setting.	

HOUSTON APP CON 123.8 257.7	CLNC DEL 121.15	UNICOM 123.05 (CTAF) 0
---------------------------------------	---------------------------	----------------------------------



JOSEY 2000 150° 1700 900 7.2 NM 2.5 NM 2.4 NM	VGSIs and descent angles not coincident (VGSi Angle 3.70/TCH 43).			600 ↑	2000 ↷	SHYNR ✧
	ORENT 3.00° TCH 45	ZASGI 2.4 NM to RWY 15	RWY 15			
CATEGORY	A	B	C	D		
LP MDA	540-1	429 (500-1)	540-1¼ 429 (500-1¼)	NA		
LNAV MDA	580-1	469 (500-1)	580-1¾ 469 (500-1¾)	NA		
CIRCLING	600-1 489 (500-1)	640-1 529 (600-1)	800-2 689 (700-2)	NA		

SC-5, 11 JUN 2026 to 09 JUL 2026

SC-5, 11 JUN 2026 to 09 JUL 2026