

LOC/DME I-LVK <b>110.5</b> Chan 42	APP CRS <b>255°</b>	Rwy Ldg TDZE Apt Elev <b>5253</b> <b>400</b> <b>400</b>
--	------------------------	--


# ILS RWY 25R

LIVERMORE MUNI (LVK)

DME required.

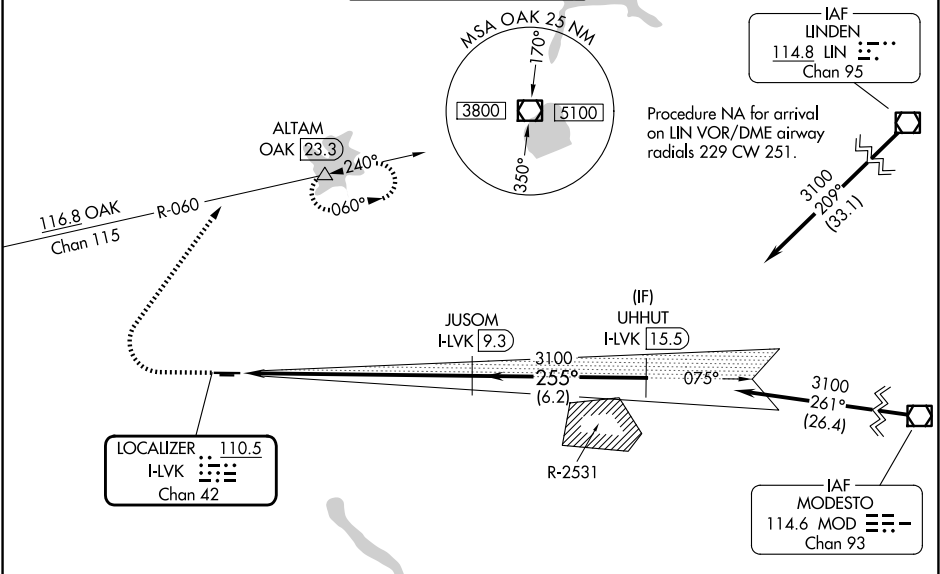
**▼**  
**▲**

MALSRL

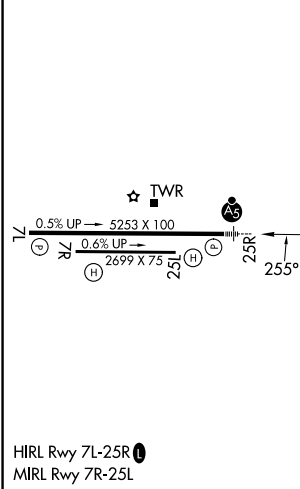


MISSED APPROACH: Climb to 1200 then climbing right turn to 5000 on heading 020° and OAK VOR/DME R-060 to ALTAM/OAK VOR/DME 23.3 DME and hold, continue climb-in-hold to 5000.  
\*Missed approach requires a minimum climb of 358 feet per NM to 3600, if unable to meet climb gradient, see LOC RWY 25R.

ATIS <b>119.65</b>	NORCAL APP CON <b>123.85 278.3</b>	LIVERMORE TOWER ★ <b>118.1 (CTAF) 239.25</b>	GND CON <b>121.6</b>	UNICOM <b>122.95</b>
-----------------------	---------------------------------------	---	-------------------------	-------------------------



ELEV 400	TDZE 400
----------	----------



1200	5000	OAK R-060	ALTAM	JUSOM I-LVK [9.3]	UHHUT I-LVK [15.5]
↑	hdg 020°	△		3100	3100
				255°	3100
				3100	GS 3.00° TCH 47
				8.3 NM	6.2 NM
CATEGORY	A	B	C	D	
S-ILS 25R	600-½ 200 (200-½)				

SW-2, 11 JUN 2026 to 09 JUL 2026

SW-2, 11 JUN 2026 to 09 JUL 2026