

WAAS CH <b>57903</b> <b>W08A</b>	APP CRS <b>083°</b>	Rwy Ldg TDZE Apt Elev	<b>5102</b> <b>3260</b> <b>3279</b>
--	------------------------	-----------------------------	---

# RNAV (GPS) RWY 8

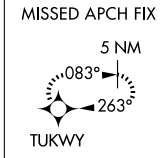
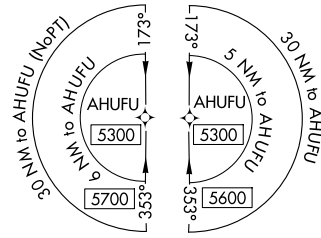
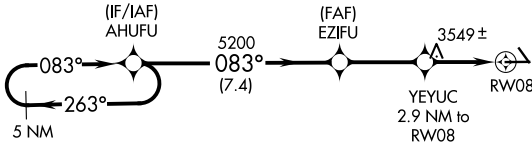
SEARLE FLD (OGA)

RNP APCH - GPS.

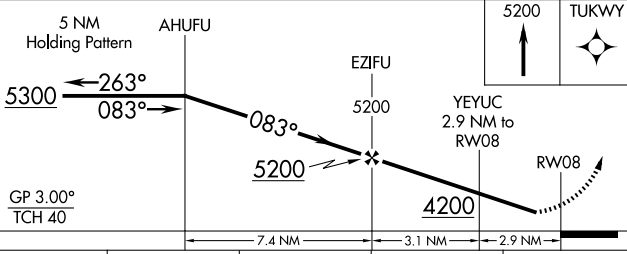
**⚠** For uncompensated Baro-VNAV systems, LNAV/VNAV NA below -21°C or above 54°C. When local altimeter setting not received, use IML altimeter setting and increase LPV DA to 3596 and all visibilities ½ SM, increase LNAV/VNAV DA to 3951 and all visibilities ¼ SM, increase all MDA 100 feet and Circling Cat B visibility ¼ SM. Baro-VNAV NA when using IML altimeter setting.

**MISSED APPROACH:**  
Climb to 5200 direct TUKWY and hold.

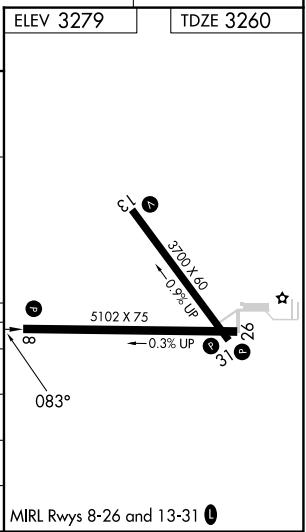
AWOS-3 <b>121.275</b>	DENVER CENTER <b>132.7 397.85</b>	UNICOM <b>122.8 (CTAF) 0</b>
--------------------------	--------------------------------------	---------------------------------



ELEV 3279	TDZE 3260
-----------	-----------



CATEGORY	A	B	C	D
LPV DA	3510-1	250 (300-1)		NA
LNAV/VNAV DA	3865-2¼	605 (600-2¼)		NA
LNAV MDA	3800-1	540 (600-1)		NA
CIRCLING	3940-1 661 (700-1)	4000-1 721 (800-1)		NA



NC-2, 11 JUN 2026 to 09 JUL 2026

NC-2, 11 JUN 2026 to 09 JUL 2026