


LOC/DME I-CFU 108.3 Chan 20	APP CRS 331°	Rwy Ldg TDZE Apt Elev	5500 217 236
--	------------------------	-----------------------------	---

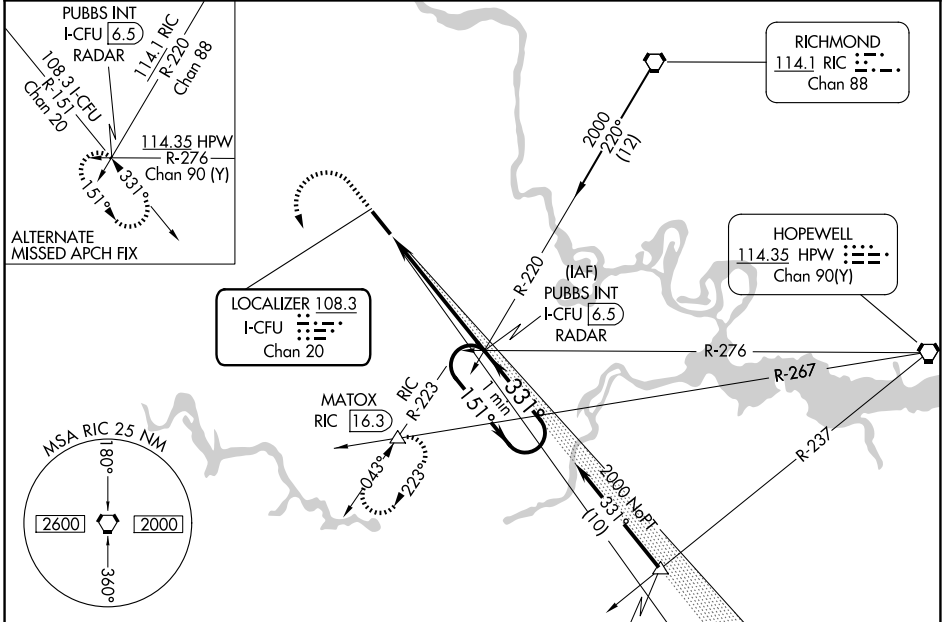
ILS or LOC RWY 33

RICHMOND EXEC/CHESTERFIELD COUNTY (F'CI)

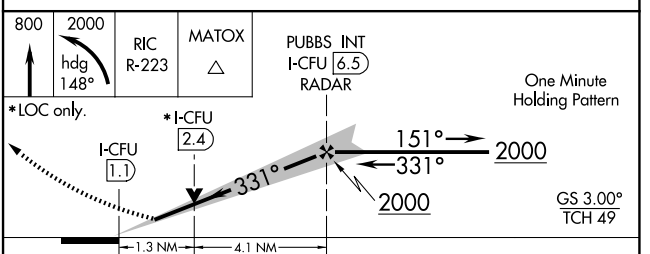
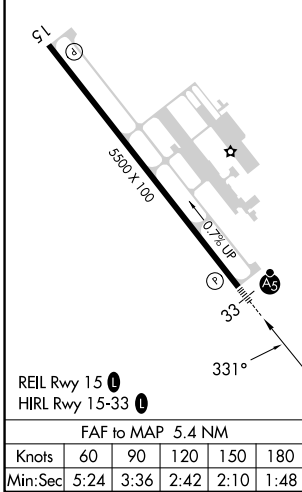
⚠ When local altimeter setting not received, use RIC altimeter setting and increase S-ILS 33 DA to 454 feet; increase all MDAs 40 feet and S-LOC 33 visibility Cat C/D 1/8 SM, and Circling visibility Cat C/D 1/4 SM. VDP NA when using RIC altimeter setting.

MALSR
 MISSED APPROACH: Climb to 800, then climbing left turn to 2000 on heading 148° and on RIC VORTAC R-223 to MATOX INT/RIC 16.3 DME and hold, continue climb-in-hold to 2000.

AWOS-3PT 128.625	POTOMAC APP CON 126.75 307.2	CLNC DEL 124.6	UNICOM 123.05 (CTAF) 0
----------------------------	--	--------------------------	----------------------------------



ELEV 236	TDZE 217
----------	----------



CATEGORY	A	B	C	D
S-ILS 33	417-1/2 200 (200-1/2)			
S-LOC 33	660-1/2	443 (500-1/2)	660-7/8	443 (500-7/8)
CIRCLING	720-1 484 (500-1)	820-1 584 (600-1)	820-1 1/2 584 (600-1 1/2)	1020-2 1/2 784 (800-2 1/2)

ILS or LOC RWY 33

NE-3, 11 JUN 2026 to 09 JUL 2026

NE-3, 11 JUN 2026 to 09 JUL 2026