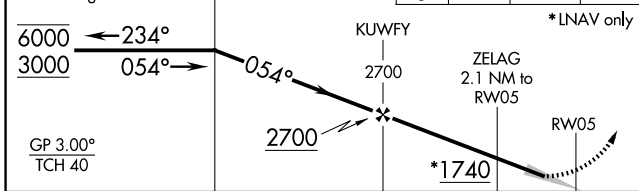
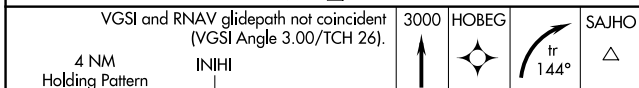
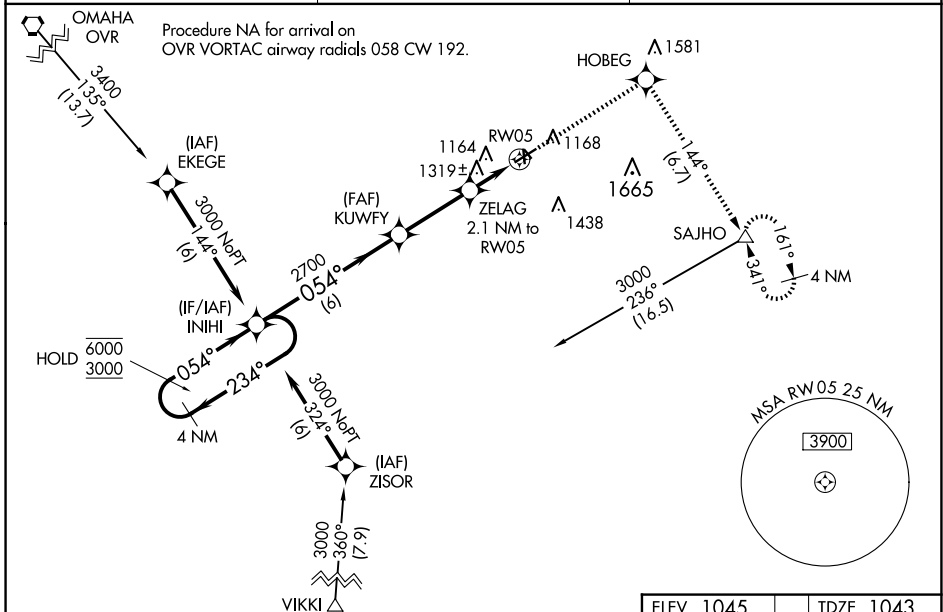


WAAS CH 42927	APP CRS 054°	Rwy ldg TDZE 1043	4100
W05A		Apt Elev 1045	

RNAV (GPS) RWY 5

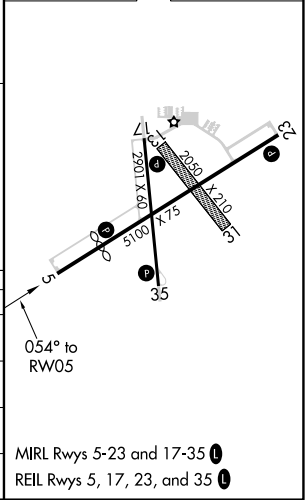
RED OAK MUNI (RDK)

RNP APCH		MISSED APPROACH: Climb to 3000 direct HOBEG and right turn on track 144° to SAJHO and hold.
<p>▽</p> <p>▲ Circling NA to Rwys 13 and 31. For uncompensated Baro-VNAV systems, LNAV/VNAV NA below -17° C or above 54° C.</p>		
AWOS-3P 123.925	OMAHA APP CON 124.5 263.0	UNICOM 122.8 (CTAF) 0



ELEV 1045	TDZE 1043
-----------	-----------

CATEGORY	A	B	C	D
LPV DA	1363-1	320 (400-1)		NA
LNAV/VNAV DA	1660-2¼	617 (700-2¼)		NA
LNAV MDA	1600-1	557 (600-1)		NA
CIRCLING	1620-1 575 (600-1)	1740-1 695 (700-1)		NA



NC-3, 11 JUN 2026 to 09 JUL 2026

NC-3, 11 JUN 2026 to 09 JUL 2026