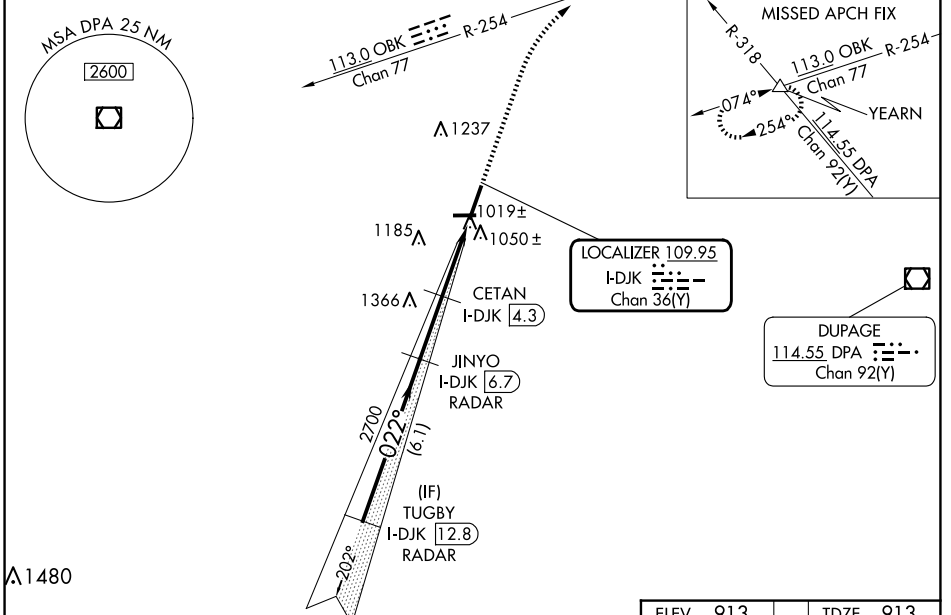


LOC/DME I-DJK <b>109.95</b> Chan <b>36</b> (Y)	APP CRS <b>022°</b>	Rwy Ldg <b>7026</b>	TDZE <b>913</b>	Apt Elev <b>913</b>
--	------------------------	------------------------	--------------------	------------------------

# ILS or LOC RWY 2

DE KALB TAYLOR MUNI (DKB)

RADAR required for procedure entry. DME or RADAR required.		MALSRS 	MISSED APPROACH: Climb to 3000 on heading 022° and OBK VOR/DME R-254 to YEARN/DME and hold.
AWOS-3 <b>119.075</b>	CHICAGO APP CON <b>133.5 349.0</b>	UNICOM <b>122.7</b> (CTAF) <b>0</b>	



VGSI and ILS glidepath not coincident (VGSI Angle 3.00/TCH 53).

3000  
hdg 022°

OBK R-254

YEARN △

TUGBY I-DJK 12.8 RADAR

JINYO I-DJK 6.7 RADAR

CETAN I-DJK 4.3

2700

022°

2700

1900

I-DJK 2.4

I-DJK 1.3

GS 3.00° TCH 55

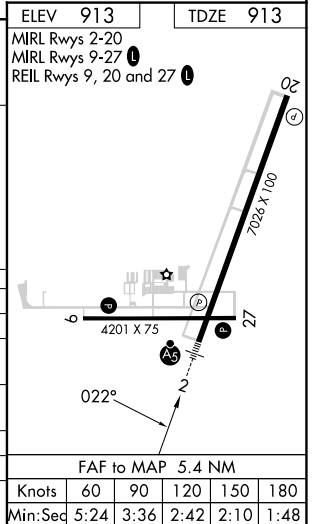
6.1 NM

2.4 NM

1.9

1.1

CATEGORY	A	B	C	D
S-ILS 2	1113-1/2		200 (200-1/2)	
S-LOC 2	1900-3/4 987 (1000-3/4)	1900-1 987 (1000-1)	1900-2 1/2	987 (1000-2 1/2)
CIRCLING	1900-1 1/4 987 (1000-1 1/4)	1900-1 1/2 987 (1000-1 1/2)	1900-3	987 (1000-3)
CETAN FIX MINIMUMS (DME REQUIRED)				
S-LOC 2	1280-1/2	367 (400-1/2)	1280-5/8	367 (400-5/8)
CIRCLING	1360-1 447 (500-1)	1500-1 587 (600-1)	1600-2 687 (700-2)	1740-2 3/4 827 (900-2 3/4)



EC-3, 11 JUN 2026 to 09 JUL 2026

EC-3, 11 JUN 2026 to 09 JUL 2026