

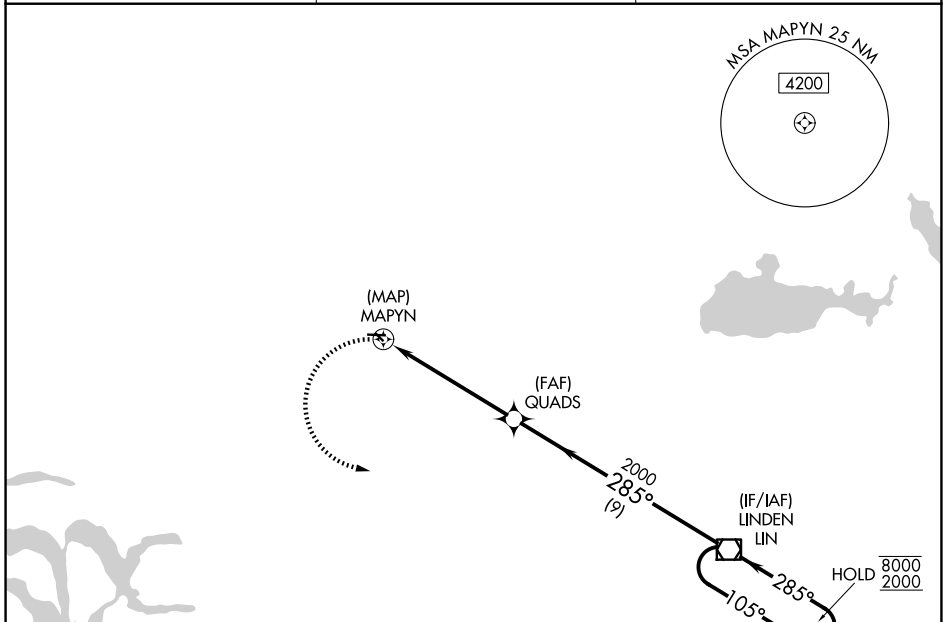
APP CRS <b>285°</b>	Rwy Ldg TDZE Apt Elev	<b>N/A</b> <b>N/A</b> <b>60</b>
------------------------	-----------------------------	---------------------------------------

# RNAV (GPS)-B

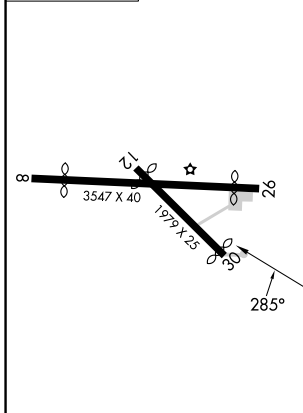
LODI (103)

RNP APCH.	<p>▼ Procedure NA at night.</p> <p>▲NA Use Stockton altimeter setting; when not received, use Sacramento Intl altimeter setting and increase all MDA 40 feet.</p>	MISSED APPROACH: Climbing left turn to 2000 direct LIN VOR/DME and hold.
-----------	---	--

SCK ASOS <b>118.25</b>	NORCAL APP CON <b>125.1 363.2</b>	CTAF <b>122.9</b>
---------------------------	--------------------------------------	----------------------



ELEV 60



	2000	LIN	QUADS	LIN VOR/DME	4 NM Holding Pattern
			285°	105°	8000
			2000	285°	2000
		5.5 NM	9 NM		
CATEGORY	A	B	C	D	
CIRCLING	640-1	580 (600-1)			NA

SW-2, 11 JUN 2026 to 09 JUL 2026

SW-2, 11 JUN 2026 to 09 JUL 2026